

Specifications
Shift
by Scholten & Baijings
466527

maharam

Application

Seating

Note: This textile is available as a made-to-order pillow.

Characteristics

Content: 66% Cotton, 20% Solution-Dyed Nylon, 14% Polyester

Finish: Stain Repellent

Additional Finishes Available: Alta, Alta Food and Beverage, Nanotex, Nanotex with Impermeable Barrier

Backing: Acrylic

Width: 54" (137cm)

Repeat: 15 3/4" V, 1/2" H (40cm V, 1cm H)

Bolt Size: 30 yards (27 m)

Weight: 23.6 oz/ly (732 gr/lm)

Country of Origin: USA

Price

\$106.00 / C\$147.50 (FOB destination) / C\$143.25 (FOB origin)

Maintenance

S-Clean with mild, water-free dry cleaning solvent.

☒ ☒ ☒ ☒ ☐

Testing

Abrasion: ASTM D4157, 100,000 double rubs Wyzenbeek

Note: Abrasion test results exceeding ACT Performance Guidelines are not an indicator of product lifespan.

Multiple factors affect fabric durability and appearance retention.

Flammability: BS 5852 Crib 5*

CAL 117-2013

EN 1021-1*

EN 1021-2*

*passes with additional treatment

Lightfastness: AATCC 16E, 40+ hours

☐ ☀ 🔥 💧 ☆

Specifications
Shift
by Scholten & Baijings
466527

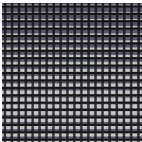
maharam

Environmental
Greenguard Gold Certified
Contains Bio-Based Materials
FR Free

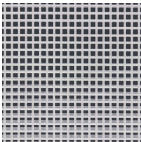
Warranty
3 years.

© 2020 Maharam

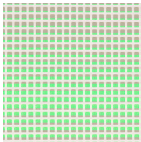
Complete product information at maharam.com
800.645.3943



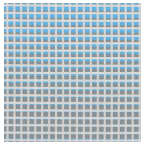
001 Pitch



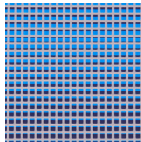
002 Pewter



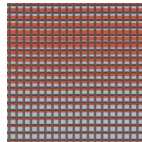
003 Acid



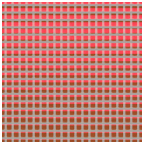
004 Sphere



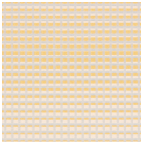
005 Azure



006 Copper



007 Laser



008 Straw