

Allermuir

Axis Credenza

allermuir.com

Axis Credenzas

Design – Allermuir

Elevated on raised legs, Axis Credenzas offer a refined, multifunctional solution that seamlessly combines elegant storage with a practical surface that can be used for displays or catering.

Their aesthetic can be further enhanced with optional premium tops, including stone and marble finishes, making them equally at home in boardrooms, collaborative spaces, or hospitality environments.



standard & optional features

- Standard feature
- Not available

	ACT02 Credenza Top 42" (w)	ACT03 Credenza Top 61" (w)	ACT04 Credenza Top 81" (w)	ACT05 Credenza Top 100" (w)
Weight	-	-	-	-
1" TFL Top with matching edge tape (TE)*	●	●	●	●
1" Laminate faced MDF core top with contrast edge tape (TE)*, 3D PLY	●	●	●	●
1.25" Stone and Marble tops: Travertine, White Carrara Marble, and Green Marble	●	●	●	●
Optional Features				
Contrasting edge tape: Oak, White, Black, or Beech	+\$0	+\$0	+\$0	+\$0

[Click here to see available options](#)

Code	TFL Standard	TFL Premium Colors	TFL Premium Wood Grains	Global Laminates	Travertine	White Carrara Marble	Green Marble
ACT02 • Credenza Top • 39.5" (w) x 17.5" (d) • To fit 42" (w) x 18" (d)	165 See note 1	170 See note 1	180 See note 1	668 See note 1	5,681 See note 1	4,794 See note 1	4,989 See note 1
ACT03 • Credenza Top • 59.5" (w) x 17.5" (d) • To fit 61" (w) x 18" (d)	200 See note 1	210 See note 1	220 See note 1	970 See note 1	7,704 See note 1	6,288 See note 1	6,540 See note 1
ACT04 • Credenza Top • 79.5" (w) x 17.5" (d) • To fit 81" (w) x 18" (d)	235 See note 1	245 See note 1	255 See note 1	1,290 See note 1	9,933 See note 1	8,248 See note 1	9,475 See note 1
ACT05 • Credenza Top • 99" (w) x 17.5" (d) • To fit 100" (w) x 18" (d)	270 See note 1	290 See note 1	300 See note 1	1,590 See note 1	11,117 See note 1	9,377 See note 1	10,696 See note 1

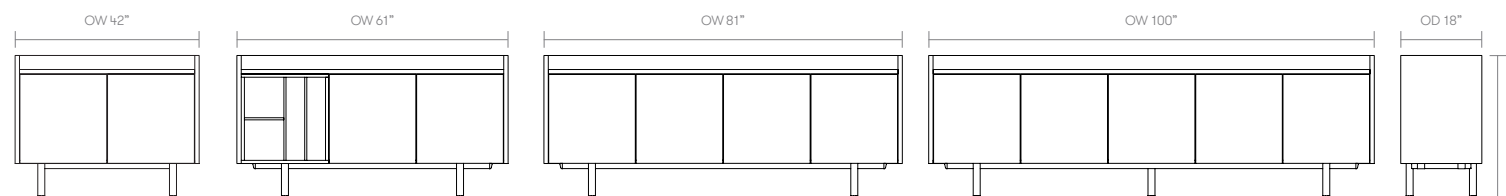
TFL = TFL Range

TE = Taped Edge

All prices listed in US \$

Note 1: Credenza must be ordered separately
Top dimensions available on request

dimensions – OH - Overall Height OD - Overall Depth OW - Overall Width



Axis Credenzas

Design – Allermuir

Elevated on raised legs, Axis Credenzas offer a refined, multifunctional solution that seamlessly combines elegant storage with a practical surface that can be used for displays or catering.

Their aesthetic can be further enhanced with optional premium tops, including stone and marble finishes, making them equally at home in boardrooms, collaborative spaces, or hospitality environments.



standard & optional features

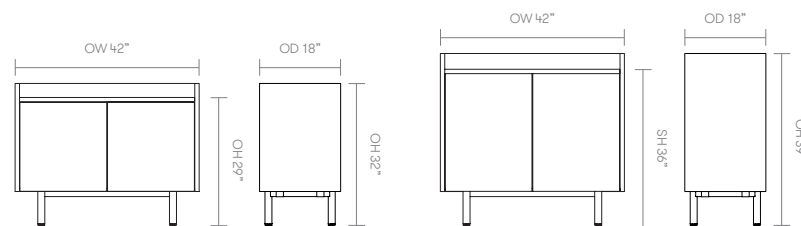
- Standard feature
- Not available

	AC3242A Credenza 32"(h) 42" x 18"	AC3242B Credenza 32"(h) 42" x 18"	AC3242C Credenza 32"(h) 42" x 18"	AC3942A Credenza 39"(h) 42" x 18"	AC3942B Credenza 39"(h) 42" x 18"	AC3942C Credenza 39"(h) 42" x 18"
Weight	-	-	-	-	-	-
Carcass: 1" TFL Base and Panel Ends	●	●	●	●	●	●
0.75" TFL Door	●	□	□	□	□	●
0.75" TFL Mid Door	□	□	□	●	●	□
0.75" TFL Adjustable Shelf (1 Per Door Section)	●	□	□	●	●	●
0.75" TFL Short Drawer	□	●	□	□	□	□
0.75" TFL Long Drawer	□	□	●	□	□	□
0.75" TFL Short Slim Drawer	□	□	□	□	●	□
0.75" TFL Long Slim Drawer	□	□	□	□	□	●
Combo Insert	□	●	□	□	□	□
4 Shelf Insert - 3 Shelves	□	□	□	□	●	□
Steel frame finished in Black powder coat frame*	●	●	●	●	●	●
Plastic glides	●	●	●	●	●	●
Push to open doors and drawers	●	●	●	●	●	●
Optional features:						
Steel frame available in White, Umbra Gray, Dark Bronze or Ceramic White powder coat	+\$0	+\$0	+\$0	+\$0	+\$0	+\$0
Multi tone TFL comes as standard - Carcass / Insert / Door + Drawer fronts	+\$0	+\$0	+\$0	+\$0	+\$0	+\$0

[Click here to see available options](#)

When specifying please use the price of the highest grade TFL required.

dimensions – OH - Overall Height OD - Overall Depth OW - Overall Width SH - Surface Height



Code	TFL Standard	TFL Premium Colors	TFL Premium Wood Grains
AC3242A • Credenza • 32"(h) x 42"(w) x 18"(d) • 2 x Door	1,500 See note 1	1,545 See note 1	1,620 See note 1
AC3242B • 32"(h) x 42"(w) x 18"(d) • 1 x Combo Insert • 2 x Short Drawer	2,995 See note 1	3,085 See note 1	3,235 See note 1
AC3242C • Credenza • 32"(h) x 42"(w) x 18"(d) • 2 x Long Drawer	2,775 See note 1	2,860 See note 1	3,000 See note 1
AC3942A • Credenza • 39"(h) x 42"(w) x 18"(d) • 2 x Mid Door	1,620 See note 1	1,670 See note 1	1,750 See note 1
AC3942B • Credenza • 39"(h) x 42"(w) x 18"(d) • 1 x Shelf Insert • 1 x Short Slim Drawer • 1 x Mid Door	2,520 See note 1	2,600 See note 1	2,725 See note 1
AC3942C • Credenza • 39"(h) x 42"(w) x 18"(d) • 1 x Long Slim Drawer • 2 x Door	2,490 See note 1	2,565 See note 1	2,690 See note 1

TFL = TFL Range

All prices listed in US \$

Note 1: Credenza Top must be ordered separately
Top shown not included
Ships Semi-KD = Knock Down (needs some assembly)



Axis Credenzas

Design – Allermuir

Elevated on raised legs, Axis Credenzas offer a refined, multifunctional solution that seamlessly combines elegant storage with a practical surface that can be used for displays or catering.

Their aesthetic can be further enhanced with optional premium tops, including stone and marble finishes, making them equally at home in boardrooms, collaborative spaces, or hospitality environments.



standard & optional features

● Standard feature
 □ Not available

	AC5242A Credenza 52"(h) 42" x 18"	AC5242B Credenza 52"(h) 42" x 18"	AC5242C Credenza 52"(h) 42" x 18"	AC3242DC Credenza 32"(h) 42" x 18"	AC3942DC Credenza 39"(h) 42" x 18"	AC5242DC Credenza 52"(h) 42" x 18"
Weight	-	-	-	-	-	-
Carcass: 1" TFL Base and Panel Ends	●	●	●	●	●	●
0.75" TFL Door	●	●	●	□	□	□
0.75" TFL Tall Door	□	□	●	□	●	●
0.75" TFL Adjustable Shelf (1 Per Door Section)	●	●	●	□	●	●
0.75" TFL Short Drawer	□	□	●	●	●	●
0.75" TFL Long Drawer	□	●	□	□	□	□
Combo Insert	●	□	□	□	□	□
Mini Fridge	□	□	□	●	●	●
Steel frame finished in Black powder coat frame*	●	●	●	●	●	●
Plastic glides	●	●	●	●	●	●
Push to Open Doors and Drawers	●	●	●	●	●	●
Optional features:						
Steel frame available in White, Umbra Gray, Dark Bornze or Ceramic White powder coat	+\$0	+\$0	+\$0	+\$0	+\$0	+\$0
Multi tone TFL comes as standard - Carcass / Insert / Door + Drawer fronts	+\$0	+\$0	+\$0	+\$0	+\$0	+\$0

Click here to see available options

When specifying please use the price of the highest grade TFL required.

Code	TFL Standard	TFL Premium Colors	TFL Premium Wood Grains
AC5242A • Credenza • 52"(h) x 42"(w) x 18"(d) • 1 x Combo Insert • 3 x Door	2,455 See note 1	2,530 See note 1	2,655 See note 1
AC5242B • 52"(h) x 42"(w) x 18"(d) • 2 x Long Drawer • 2 x Door	3,555 See note 1	3,665 See note 1	3,840 See note 1
AC5242C • Credenza • 52"(h) x 42"(w) x 18"(d) • 2 x Short Drawer • 1 x Tall Door • 1 x Door	3,755 See note 1	3,870 See note 1	4,055 See note 1
AC3242DC • Credenza • 32"(h) x 42"(w) x 18"(d) • 2 x Short Drawer • 1 x Mini Fridge	5,795 See note 1	5,885 See note 1	6,035 See note 1
AC3942DC • Credenza • 39"(h) x 42"(w) x 18"(d) • 2 x Short Drawer • 1 x Door • 1 x Mini Fridge	5,290 See note 1	5,365 See note 1	5,490 See note 1
AC5242DC • Credenza • 52"(h) x 42"(w) x 18"(d) • 2 x Short Drawer • 1 x Tall Door • 1 x Mini Fridge	6,355 See note 1	6,465 See note 1	6,640 See note 1

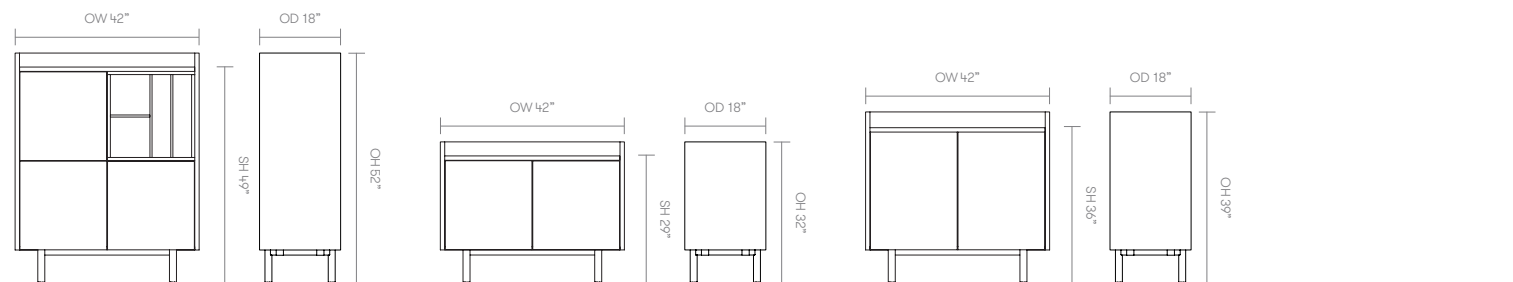
TFL = TFL Range

All prices listed in US \$

Note 1: Credenza Top must be ordered separately
 Top shown not included
 Ships Semi-KD = Knock Down (needs some assembly)



dimensions – OH - Overall Height OD - Overall Depth OW - Overall Width SH - Surface Height



Axis Credenzas

Design – Allermuir

Elevated on raised legs, Axis Credenzas offer a refined, multifunctional solution that seamlessly combines elegant storage with a practical surface that can be used for displays or catering.



Their aesthetic can be further enhanced with optional premium tops, including stone and marble finishes, making them equally at home in boardrooms, collaborative spaces, or hospitality environments.

standard & optional features

- Standard feature
- Not available

	AC3261A Credenza 32"(h) 61" x 18"	AC3261B Credenza 32"(h) 61" x 18"	AC3261C Credenza 32"(h) 61" x 18"	AC3961A Credenza 39"(h) 61" x 18"	AC3961B Credenza 39"(h) 61" x 18"	AC3961C Credenza 39"(h) 61" x 18"
Weight	-	-	-	-	-	-
Carcass: 1" TFL Base and Panel Ends	●	●	●	●	●	●
0.75" TFL Door	●	●	●	□	□	●
0.75" TFL Mid Door	□	□	□	●	●	□
0.75" TFL Adjustable Internal Shelf (1 Per Door Section)	●	●	●	●	●	●
0.75" TFL Short Drawer	□	●	□	□	□	□
0.75" TFL Long Drawer	□	□	●	□	□	□
0.75" TFL Short Slim Drawer	□	□	□	□	●	●
0.75" TFL Long Slim Drawer	□	□	□	□	□	●
Combo Insert	●	□	□	□	□	●
Shelf Insert - 3 Shelves	□	□	□	□	●	□
Steel frame finished in Black powder coat frame*	●	●	●	●	●	●
Plastic glides	●	●	●	●	●	●
Push to Open Doors and Drawers	●	●	●	●	●	●
Optional features:						
Steel frame available in White, Umbra Gray, Dark Bronze or Ceramic White powder coat	+\$0	+\$0	+\$0	+\$0	+\$0	+\$0
Multi tone TFL comes as standard - Carcass / Insert / Door + Drawer fronts	+\$0	+\$0	+\$0	+\$0	+\$0	+\$0

[Click here to see available options](#)

When specifying please use the price of the highest grade TFL required.

Code	TFL Standard	TFL Premium Colors	TFL Premium Wood Grains
AC3261A • Credenza • 32"(h) x 61"(w) x 18"(d) • 1 x Combo Insert • 2 x Door	2,070 See note 1	2,135 See note 1	2,240 See note 1
AC3261B • 32"(h) x 61"(w) x 18"(d) • 2 x Short Drawer • 2 x Door	3,390 See note 1	3,495 See note 1	3,665 See note 1
AC3261C • Credenza • 32"(h) x 61"(w) x 18"(d) • 2 x Long Drawer • 1 x Door	3,345 See note 1	3,450 See note 1	3,615 See note 1
AC3961A • Credenza • 39"(h) x 61"(w) x 18"(d) • 3 x Mid Door	2,225 See note 1	2,325 See note 1	2,425 See note 1
AC3961B • Credenza • 39"(h) x 61"(w) x 18"(d) • 1 x Shelf Insert • 1 x Short Slim Drawer • 2 x Mid Door	3,160 See note 1	3,255 See note 1	3,415 See note 1
AC3961C • Credenza • 39"(h) x 61"(w) x 18"(d) • 1 x Short Slim Drawer • 1 x Long Slim Drawer • 2 x Long Drawer • 1 x Door	5,095 See note 1	5,250 See note 1	5,505 See note 1

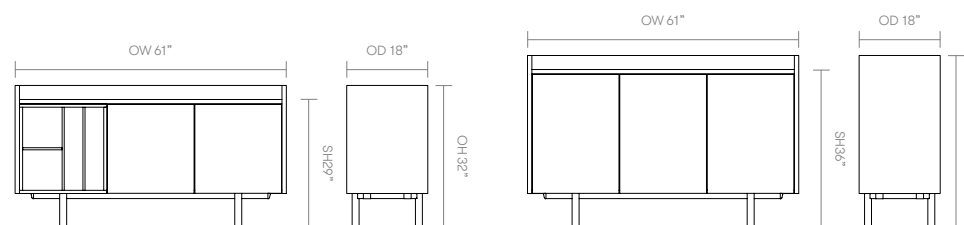
TFL = TFL Range

All prices listed in US \$

Note 1: Credenza Top must be ordered separately
Top shown not included
Ships Semi-KD = Knock Down (needs some assembly)



dimensions – OH - Overall Height OD - Overall Depth OW - Overall Width SH - Surface Height



Axis Credenzas

Design – Allermuir



Elevated on raised legs, Axis Credenzas offer a refined, multifunctional solution that seamlessly combines elegant storage with a practical surface that can be used for displays or catering.

Their aesthetic can be further enhanced with optional premium tops, including stone and marble finishes, making them equally at home in boardrooms, collaborative spaces, or hospitality environments.

standard & optional features

- Standard feature
- Not available

	AC5261A Credenza 52"(h) 61" x 18"	AC5261B Credenza 52"(h) 61" x 18"	AC5261C Credenza 52"(h) 61" x 18"	AC3261DC Credenza 32"(h) 61" x 18"	AC3961DC Credenza 39"(h) 61" x 18"	AC5261DC Credenza 52"(h) 61" x 18"
Weight	-	-	-	-	-	-
Carcass: 1" TFL Base and Panel Ends	●	●	●	●	●	●
0.75" TFL Door	●	□	●	□	□	●
0.75" TFL Mid Door	□	□	□	●	□	□
0.75" TFL Tall Door	□	●	●	□	□	●
0.75" TFL Adjustable Internal Shelf (1 per door section)	●	●	●	□	□	□
0.75" TFL Short Drawer	□	●	□	□	□	□
0.75" TFL Long Drawer	□	□	●	●	●	□
0.75" TFL Short Slim Drawer	□	□	□	□	●	□
0.75" TFL Long Slim Drawer	□	□	□	□	●	□
Combo Insert	□	●	□	□	□	□
Mini Fridge	□	□	□	●	●	●
Steel frame finished in Black powder coat frame*	●	●	●	●	●	●
Plastic glides	●	●	●	●	●	●
Push to Open Doors and Drawers	●	●	●	●	●	●
Optional features:						
Steel frame available in White, Umbra Gray, Dark Bronze or Ceramic White powder coat	+\$0	+\$0	+\$0	+\$0	+\$0	+\$0
Multi tone TFL comes as standard - Carcass / Insert / Door + Drawer fronts	+\$0	+\$0	+\$0	+\$0	+\$0	+\$0

Click here to see available options

When specifying please use the price of the highest grade TFL required.

Code	TFL Standard	TFL Premium Colors	TFL Premium Wood Grains
AC5261A • Credenza • 52"(h) x 61"(w) x 18"(d) • 6 x Door	3,290 See note 1	3,390 See note 1	3,555 See note 1
AC5261B • Credenza • 52"(h) x 61"(w) x 18"(d) • 1 x Combo Insert • 2 x Short Drawer • 2 x Tall Door	4,040 See note 1	4,165 See note 1	4,365 See note 1
AC5261C • Credenza • 52"(h) x 61"(w) x 18"(d) • 2 x Long Drawer • 2 x Door • 1 x Tall Door	4,260 See note 1	4,390 See note 1	4,600 See note 1
AC3261DC • Credenza • 32"(h) x 61"(w) x 18"(d) • 2 x Long Drawer • Mini Fridge	6,145 See note 1	6,250 See note 1	6,415 See note 1
AC3961DC • Credenza • 39"(h) x 61"(w) x 18"(d) • 1 x Short Slim Drawer • 1 x Long Slim Drawer • 2 x Long Drawer • 1 x Mini Fridge	7,895 See note 1	8,050 See note 1	8,305 See note 1
AC5261DC • Credenza • 52"(h) x 61"(w) x 18"(d) • 2 x Short Drawer • 2 x Tall Door • 1 x Mini Fridge	6,840 See note 1	6,965 See note 1	7,165 See note 1

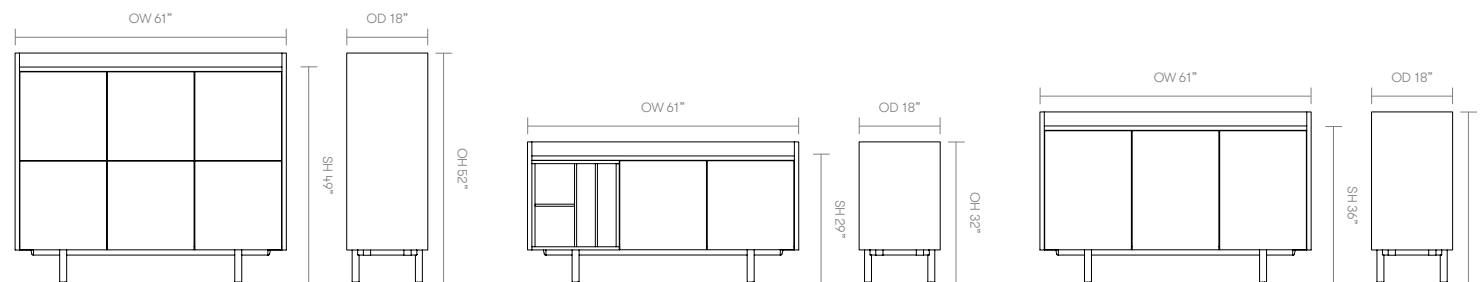
TFL = TFL Range

All prices listed in US \$

Note 1: Credenza Top must be ordered separately
Top shown not included
Ships Semi-KD = Knock Down (needs some assembly)



dimensions – OH - Overall Height OD - Overall Depth OW - Overall Width SH - Surface Height



Axis Credenzas

Design – Allermuir

Elevated on raised legs, Axis Credenzas offer a refined, multifunctional solution that seamlessly combines elegant storage with a practical surface that can be used for displays or catering.

Their aesthetic can be further enhanced with optional premium tops, including stone and marble finishes, making them equally at home in boardrooms, collaborative spaces, or hospitality environments.



standard & optional features

● Standard feature
□ Not available

	AC3281A Credenza 32"(h) 81" x 18"	AC3281B Credenza 32"(h) 81" x 18"	AC3281C Credenza 32"(h) 81" x 18"	AC3981A Credenza 39"(h) 81" x 18"	AC3981B Credenza 39"(h) 81" x 18"	AC3981C Credenza 39"(h) 81" x 18"
Weight	-	-	-	-	-	-
Carcass: 1" TFL Base and Panel Ends	●	●	●	●	●	●
0.75" TFL Door	●	●	●	□	□	●
0.75" TFL Mid Door	□	□	□	●	●	●
0.75" TFL Adjustable Internal Shelf (1 per door section)	●	●	●	●	●	●
0.75" TFL Short Drawer	□	□	●	□	□	□
0.75" TFL Long Drawer	□	●	□	□	●	□
0.75" TFL Long Slim Drawer	□	□	□	□	●	●
Steel frame finished in Black powder coat frame*	●	●	●	●	●	●
Plastic glides	●	●	●	●	●	●
Push to Open Doors and Drawers	●	●	●	●	●	●
Optional features:						
Steel frame available in White, Umbra Gray, Dark Bronze or Ceramic White powder coat	+\$0	+\$0	+\$0	+\$0	+\$0	+\$0
Multi tone TFL comes as standard - Carcass / Insert / Door + Drawer fronts	+\$0	+\$0	+\$0	+\$0	+\$0	+\$0

[Click here to see available options](#)

When specifying please use the price of the highest grade TFL required.

Code	TFL Standard	TFL Premium Colors	TFL Premium Wood Grains
AC3281A • Credenza • 32"(h) x 81"(w) x 18"(d) • 4 x Door	2,410 See note 1	2,485 See note 1	2,605 See note 1
AC3281B • Credenza • 32"(h) x 81"(w) x 18"(d) • 2 x Long Drawer • 2 x Door	3,865 See note 1	3,980 See note 1	4,175 See note 1
AC3281C • Credenza • 32"(h) x 81"(w) x 18"(d) • 2 x Short Drawer • 3 x Door	3,920 See note 1	4,040 See note 1	4,235 See note 1
AC3981A • Credenza • 39"(h) x 81"(w) x 18"(d) • 4 x Mid Door	2,630 See note 1	2,710 See note 1	2,840 See note 1
AC3981B • Credenza • 39"(h) x 81"(w) x 18"(d) • 1 x Long Slim Drawer • 2 x Long Drawer • 2 x Mid Door	4,975 See note 1	5,125 See note 1	5,375 See note 1
AC3981C • Credenza • 39"(h) x 81"(w) x 18"(d) • 1 x Long Slim Drawer • 2 x Door • 2 x Mid Door	3,700 See note 1	3,815 See note 1	4,000 See note 1

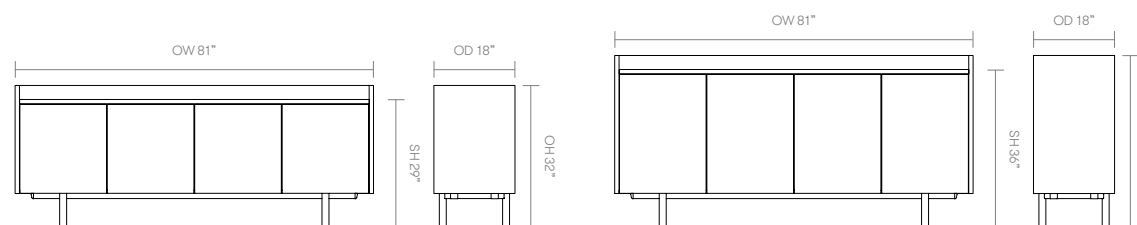
TFL = TFL Range

All prices listed in US \$

Note 1: Credenza Top must be ordered separately
Top shown not included
Ships Semi-KD = Knock Down (needs some assembly)



dimensions – OH - Overall Height OD - Overall Depth OW - Overall Width SH - Surface Height



Axis Credenzas

Design – Allermuir

Elevated on raised legs, Axis Credenzas offer a refined, multifunctional solution that seamlessly combines elegant storage with a practical surface that can be used for displays or catering.

Their aesthetic can be further enhanced with optional premium tops, including stone and marble finishes, making them equally at home in boardrooms, collaborative spaces, or hospitality environments.



Code	TFL Standard	TFL Premium Colors	TFL Premium Wood Grains
AC3281DC • Credenza • 32"(h) x 81"(w) x 18"(d) • 2 x Long Drawer • 1 x Door • 1 x Mini Fridge	6,090 See note 1	6,190 See note 1	6,255 See note 1
AC3981DC • Credenza • 39"(h) x 81"(w) x 18"(d) • 2 x Long Slim Drawer • 3 x Door • 1 x Mini Fridge	7,410 See note 1	7,550 See note 1	7,780 See note 1



TFL = TFL Range

All prices listed in US \$

Note 1: Credenza Top must be ordered separately
 Top shown not included
 Ships Semi-KD = Knock Down (needs some assembly)

standard & optional features

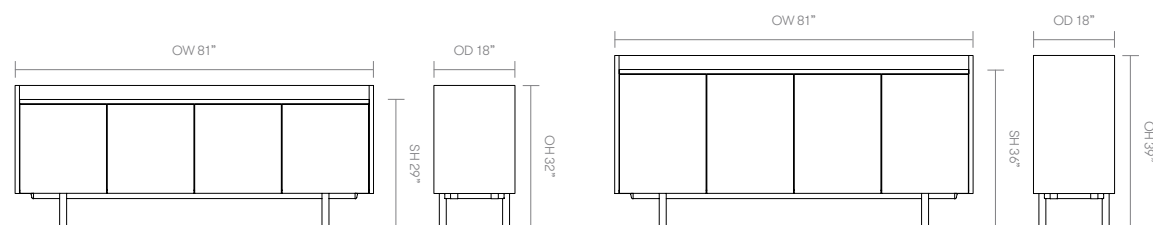
- Standard feature
- Not available

	AC3281DC Credenza 32"(h) 81" x 18"	AC3981DC Credenza 39"(h) 81" x 18"
Weight	-	-
Carcass: 1" TFL Base and Panel Ends	●	●
0.75" TFL Door	●	●
0.75" TFL Adjustable Internal Shelf (1 per door section)	●	●
0.75" TFL Long Drawer	●	□
0.75" TFL Long Slim Drawer	□	●
Mini Fridge	●	●
Steel frame finished in Black powder coat frame*	●	●
Plastic glides	●	●
Push to open doors and drawers	●	●
Optional features:		
Steel frame available in White, Umbra Gray, Dark Bronze or Ceramic White powder coat	+\$0	+\$0
Multi tone TFL comes as standard - Carcass / Insert / Door + Drawer fronts	+\$0	+\$0

[Click here to see available options](#)

When specifying please use the price of the highest grade TFL required.

dimensions – OH - Overall Height OD - Overall Depth OW - Overall Width SH - Surface Height

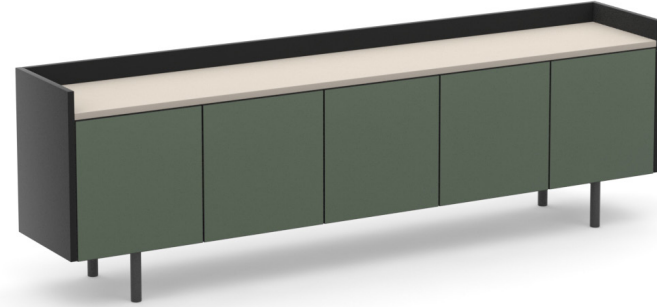


Axis Credenzas

Design – Allermuir

Elevated on raised legs, Axis Credenzas offer a refined, multifunctional solution that seamlessly combines elegant storage with a practical surface that can be used for displays or catering.

Their aesthetic can be further enhanced with optional premium tops, including stone and marble finishes, making them equally at home in boardrooms, collaborative spaces, or hospitality environments.



standard & optional features

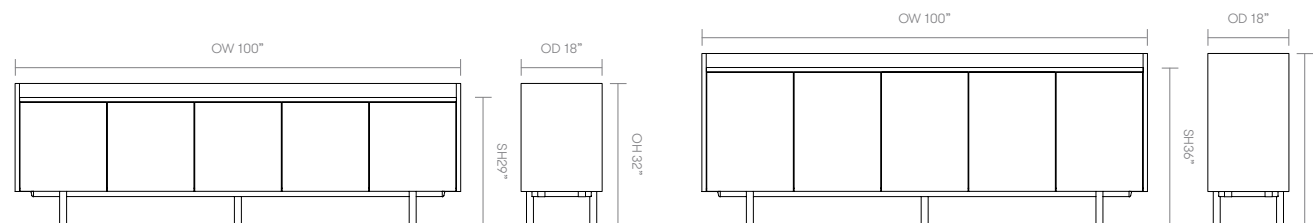
● Standard feature
□ Not available

	AC32100A Credenza 32"(h) 100" x 18"	AC32100B Credenza 32"(h) 100" x 18"	AC32100C Credenza 32"(h) 100" x 18"	AC39100A Credenza 39"(h) 100" x 18"	AC39100B Credenza 39"(h) 100" x 18"	AC39100C Credenza 39"(h) 100" x 18"
Weight	-	-	-	-	-	-
Carcass: 1" TFL Base and Panel Ends	●	●	●	●	●	●
0.75" TFL Door	●	●	●	□	□	●
0.75" TFL Mid Door	□	□	□	●	●	●
0.75" TFL Adjustable Internal Shelf (1 per door section)	●	●	●	●	●	●
0.75" TFL Short Drawer	□	□	●	□	□	□
0.75" TFL Long Drawer	□	●	□	□	□	□
0.75" TFL Short Slim Drawer	□	□	□	□	●	●
Combo Insert	□	□	□	□	●	□
Steel frame finished in Black powder coat frame*	●	●	●	●	●	●
Plastic glides	●	●	●	●	●	●
Push to open doors and drawers	●	●	●	●	●	●
Optional features:						
Steel frame available in White, Umbra Gray, Dark Bronze or Ceramic White powder coat	+\$0	+\$0	+\$0	+\$0	+\$0	+\$0
Multi tone TFL comes as standard - Carcass / Insert / Door + Drawer fronts	+\$0	+\$0	+\$0	+\$0	+\$0	+\$0

[Click here to see available options](#)

When specifying please use the price of the highest grade TFL required.

dimensions – OH - Overall Height OD - Overall Depth OW - Overall Width SH - Surface Height



[Back to index](#)

Code	TFL Standard	TFL Premium Colors	TFL Premium Wood Grains
AC32100A • Credenza • 32"(h) x 100"(w) x 18"(d) • 5 x Door	3,290 See note 1	3,390 See note 1	3,355 See note 1
AC32100B • Credenza • 32"(h) x 100"(w) x 18"(d) • 2 x Long Drawer • 3 x Door	4,610 See note 1	4,750 See note 1	4,980 See note 1
AC32100C • Credenza • 32"(h) x 100"(w) x 18"(d) • 2 x Short Drawer • 4 x Door	4,555 See note 1	4,695 See note 1	4,920 See note 1
AC39100A • Credenza • 39"(h) x 100"(w) x 18"(d) • 5 x Mid Door	3,565 See note 1	3,675 See note 1	3,850 See note 1
AC39100B • Credenza • 39"(h) x 100"(w) x 18"(d) • 1 x Combo Insert • 1 x Short Slim Drawer • 4 x Mid Door	4,390 See note 1	4,525 See note 1	4,745 See note 1
AC39100C • Credenza • 39"(h) x 100"(w) x 18"(d) • 3 x Short Slim Drawer • 3 x Door • 2 x Mid Door	6,120 See note 1	6,305 See note 1	6,610 See note 1

TFL = TFL Range

All prices listed in US \$

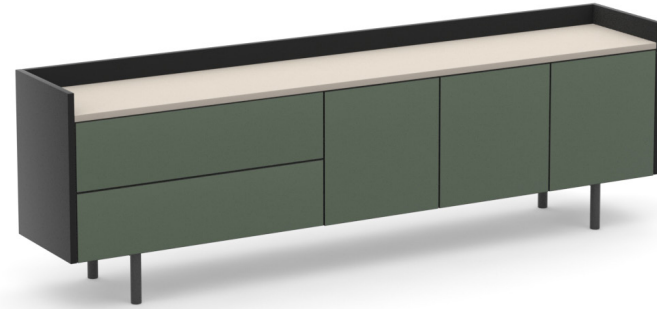
Note 1: Credenza Top must be ordered separately
Top shown not included
Ships KD = Knock Down (needs full assembly)

Axis Credenzas

Design – Allermuir

Elevated on raised legs, Axis Credenzas offer a refined, multifunctional solution that seamlessly combines elegant storage with a practical surface that can be used for displays or catering.

Their aesthetic can be further enhanced with optional premium tops, including stone and marble finishes, making them equally at home in boardrooms, collaborative spaces, or hospitality environments.



standard & optional features

- Standard feature
- Not available

	AC32100DC Credenza 32"(h) 100" x 18"	AC39100DC Credenza 39"(h) 100" x 18"
Weight	-	-
Carcass: 1" TFL Base and Panel Ends	●	●
0.75" TFL Door	●	□
0.75" TFL Mid Door	□	●
0.75" TFL Tall Door	□	□
0.75" TFL Adjustable Internal Shelf (1 per door section)	●	●
0.75" TFL Short Drawer	□	●
0.75" TFL Long Drawer	●	□
Mini Fridge	●	●
Steel frame finished in Black powder coat frame*	●	●
Plastic glides	●	●
Push to open doors and drawers	●	●
Optional features:		
Steel frame available in White, Umbra Gray, Dark Bronze or Ceramic White powder coat	+\$0	+\$0
Multi tone TFL comes as standard - Carcass / Insert / Door + Drawer fronts	+\$0	+\$0

[Click here to see available options](#)

When specifying please use the price of the highest grade TFL required.

Code	TFL Standard	TFL Premium Colors	TFL Premium Wood Grains
AC32100DC • Credenza • 32"(h) x 100"(w) x 18"(d) • 2 x Long Drawer • 2 x Door • 1 x Mini Fridge	7,410 See note 1	7,550 See note 1	7,780 See note 1
AC39100DC • Credenza • 39"(h) x 100"(w) x 18"(d) • 1 x Short Drawer • 4 x Mid Door • 1 x Mini Fridge	7,190 See note 1	7,325 See note 1	7,545 See note 1

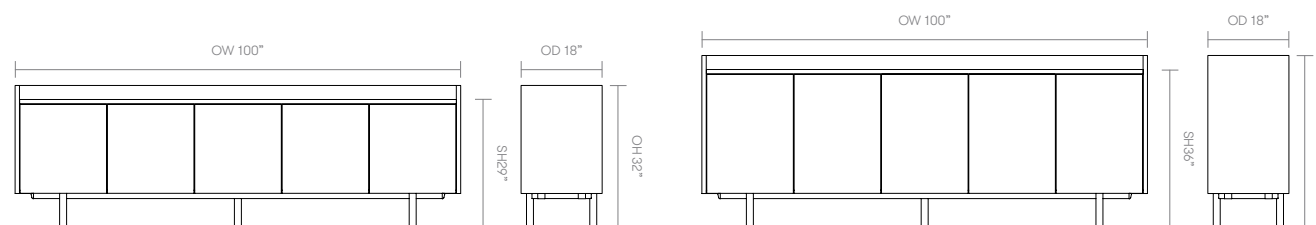
TFL = TFL Range

All prices listed in US \$

Note 1: Credenza Top must be ordered separately
Top shown not included
Ships KD = Knock Down (needs full assembly)



dimensions – OH - Overall Height OD - Overall Depth OW - Overall Width SH - Surface Height

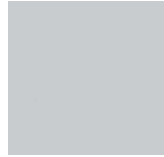


Axis Credenza

TFL Standard



Strata Oak Urban Maple White Greige Castella Oak Dark Rockford Hickory Winter Oak



Light Gray

All TFLs are available with coordinating or contrasting edge tapes.
All TFLs will have an edge profile reference of TE.

TFL Premium Colors



Basalt Premium White Premium Black Taupe Gray Slate Gray Cobalt Gray



Alby Blue Smoke Green Deep Sahara

TFL Premium Wood Grains



Brown Casella Oak Natural Casella Oak Light Casella Oak Black Casella Oak

Frame Finishes

Legs, columns, beams, and table top understructure will always be color-coordinated. Power sockets and glides will always be black or white.



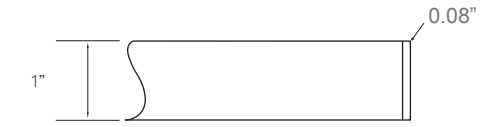
Black White Umbra Gray Dark Bronze Ceramic White

Optional Edge Tape



3D Ply Effect Edging

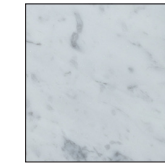
All TFLs are available with matching edge tape as standard (TE). Contrastive edge tape can be specified.



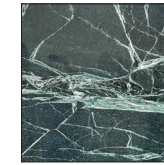
Stone and Marble Tops



Travertine



White Carrara Marble



Green Marble