



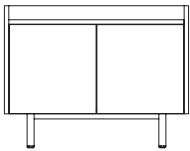
Axis Credenzas

Designed to harmonize effortlessly with Axis Tables while offering a versatile pairing for any table within the Allermuir portfolio. Axis Credenzas provide a multifunctional solution, merging elegant storage with a

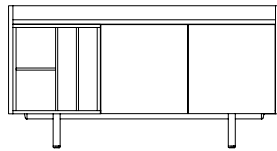
generous surface area ideal for displays, catering, or supporting collaborative workspaces. Axis Credenzas can be specified with premium tops, including luxurious stone or marble finishes, such

Design by Allermuir Design Studio

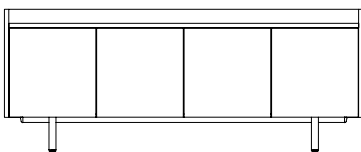
attention to detail allows the range to transition easily between formal boardrooms, dynamic collaborative spaces, and welcoming hospitality environments.



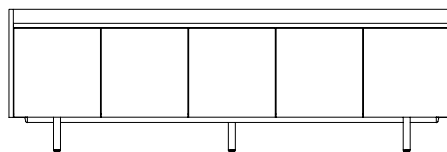
42" Wide



61" Wide



81" Wide



100" Wide



Design Allermuir

Our team of talented in house designers is responsible for creating elegant, innovative furniture designs that not only look beautiful, but minimize the impact on the world around us.

Constantly exploring new product trends and keeping up to date with the latest innovations in technology and materials, our design team creates world class designs of the highest quality.

Standard Features

(* - Selected models only)

- 1" TFL Base
- 1" TFL Panel Ends
- 1" TFL Door*
- 1" TFL Mid Door*
- 1" TFL Tall Door*
- 1" TFL Adjustable Internal Shelf*

- 1" TFL Short Drawer*
- 1" TFL Long Drawer*
- 4 x Shelf Insert*
- Combo Insert*
- Mini Fridge*
- Steel Frame
- Plastic glides

Dimensions



Finish Options

TFL Base, Panel Ends, Doors and Drawers are available in a selection of finishes

Steel Base is available in a selection of powder coat finishes.

Frame Finishes



Black White Umbra Gray Dark Bronze Ceramic White

TFL Standard Finishes



Strata Oak Urban Maple White Greige Castello Oak Dark Rockford Hickory Winter Oak Light Gray

TFL Premium Colors Finishes



Basalt Premium White Premium Black Taupe Gray Slate Gray Cobalt Gray Alby Blue Smoke Green Deep Sahara

TFL Premium Wood Grains Finishes



Brown Casella Oak Natural Casella Oak Light Natural Casella Oak Black Casella Oak

Summary of Grain Depth and Structure for Premium Woodgrain TFLs

Premium Woodgrain TFLs are part of Egger's Feelwood range, characterised by a deeper and more pronounced grain structure compared to standard TFLs. To manage this depth and prevent damage to the decorative paper, Feelwood decors incorporate additional barrier layers. This construction enhances impact resistance, bending strength, and durability.

What makes the Feelwood Premium Woodgrain TFL different?

The deeper texture in Feelwood decors is synchronised with the visual pattern, creating a highly realistic wood effect. This design also results in a slight thickness increase of approximately 0.6". These features distinguish Feelwood products from standard TFLs, offering superior durability and enhanced aesthetic appeal as a unique selling point. Due to the more pronounced grain structure, Premium Woodgrain TFLs may not be ideal where a smoother finish is required. Samples can be ordered through our GroupPortal or by contacting customer service.

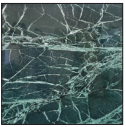
Note: Color images are for reference only. Please verify with actual color sample.

Finish Options

TFL Base, Panel Ends, Doors and Drawers are available in a selection of finishes

Steel Base is available in a selection of powder coat finishes.

Stone Top Finishes



Green Marble



Travertine



White Carrara
Marble