

Allermuir

Conic

allermuir.com

Conic

Design – PearsonLloyd

Conic is a refreshing, eye catching and exciting take on various conical forms seen in contemporary soft seating over the decades. Conic's shape and form provide excellent and inviting levels of comfort with a broad appeal. New upholstery detail gives this piece a fresh twist.



standard & optional features

- Standard feature
- Not available

	A637 Tub Chair 4 Leg Frame	A630 Tub Chair Wire Frame	A631 Lounge Chair Wire Frame	A632 Lounge Chair Wire Frame Headrest
Weight	38lbs	38lbs	44lbs	51lbs
Molded foam construction	●	●	●	●
Fully upholstered	●	●	●	●
Tubular steel frame finished in Polished Aluminum	●	□	□	□
Wire frame finished in Polished Chrome	□	●	●	●
Plastic glides	□	●	●	●
Plastic self leveling glides	●	□	□	□

Optional features:

Tubular steel frame available in Polished Chrome	+ \$95	-	-	-
Plastic self leveling glides available with felt	+ \$25	-	-	-
Wire frame available in White, New Black, Soft Gold, Soft Silver, Deep Mulberry, or Dark Bronze	+ \$80	+ \$80	+ \$80	+ \$80
Decorative railroad stitch detail to perimeter seam (Colors: Black, White, Red, Light Gray, Dark Gray and Cream)	+ \$50	+ \$50	+ \$50	+ \$50
Two-tone upholstery (use the price of the highest grade of the fabrics selected)	+ \$100	+ \$100	+ \$100	+ \$100

* [Click here to see Textile Finishes & COM Requirements](#)

* [Click here to see available Seating Metal Finishes](#)

* [Click here to see available Stitch Detail](#)

* [Click here to see a full range of Conic tables](#)

Ships Fully Assembled

Available in a limited range of coated fabrics, call the sales office for more details.

Fabric Grade	C.O.M.		C.O.L.										
	1	2	3	4	5	6	7	8	9	10	11	A	B
A637 • Tub chair • Four leg frame	2,799 2.6 yds	2,847	2,902 66 sq ft.	2,971	3,039	3,109	3,177	3,315	3,587	3,867	4,141	3,315	3,867
A630 • Tub chair • Wire frame	2,988 2.6 yds	3,037	3,092 66 sq ft.	3,162	3,231	3,299	3,367	3,505	3,781	4,056	4,331	3,505	4,056
A631 • Lounge chair • Wire frame	3,483 3.25 yds	3,533	3,587 77 sq ft.	3,657	3,723	3,793	3,861	4,000	4,275	4,550	4,825	4,000	4,550
A632 • Lounge chair with integral headrest • Wire frame	3,871 3.9 yds	3,929	3,994 99 sq ft.	4,077	4,161	4,242	4,327	4,491	4,822	5,153	5,482	4,491	5,153

A, B = Leather

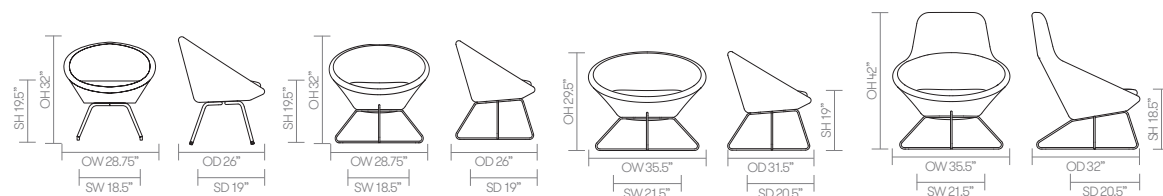
COM = Customers own Material (yds)

COL = Customers own Leather (sq ft.)

All prices listed in US \$



dimensions – OH - Overall Height OD - Overall Depth OW - Overall Width AH - Arm Height SH - Seat Height SW - Seat Width SD - Seat Depth



Conic – Low Level Tables

Design – PearsonLloyd

Conic’s range of low level tables work effortlessly with both the Conic and Open ranges given that they share a common design language. The beautifully simple Polished Chrome wire base offers a light functional structure, that allows the tables to work effortlessly in a multitude of environments.



standard & optional features

- Standard feature
- Not available

	A636-24RD	A636-21SS	A638-36RD	A638-32SS	A639-4128S
	Round Low Level 24" dia.	Soft Square Low Level 21" x 21"	Round Low Level 36" dia.	Soft Square Low Level 32" x 32"	Soft Rectangular Low Level 41" x 28"
Weight	17lbs	16lbs	38lbs	28lbs	35lbs
1" laminate faced MDF core top with a clear finish edge profile	●	●	●	●	●
Wire frame finished in Polished Chrome	●	●	●	●	●
Plastic glides	●	●	●	●	●
Optional features:					
Wire frame available in Silver M04, New Black, White, Soft Gold, Soft Silver, Dark Bronze, or Deep Mulberry	+ \$80	+ \$80	+ \$80	+ \$80	+ \$80
Table edge profile can be stained in Solid Black, Espresso and Solid White	+ \$30	+ \$30	+ \$30	+ \$30	+ \$30

Ships Semi-KD = Knock Down (Needs some assembly)

- * [Click here to see available Edge Details](#)
- * [Click here to see available Edge Stain Finishes](#)
- * [Click here to see available Laminate Options](#)
- * [Click here to see available Solid Surface Options](#)
- * [Click here to see available Table Metal Finishes](#)
- * [Click here to see Non-Stock Table Top Information](#)
- * [Click here to see the full range of Conic soft seating](#)

Code	Edge	Global Laminates GL (37)	Solid Surface A (80, 82)	Fenix (37)
A636-24RD • Round • Low level • 16"h x 24" dia.	37 80 82	1,091	3,284	1,280
A636-21SS • Soft square • Low level • 16"h x 21" x 21"	37 80 82	1,091	3,284	1,236
A638-36RD • Round • Low level • 12"h x 36" dia.	37 80 82	1,414	4,260	1,838
A638-32SS • Soft square • Low level • 12"h x 32" x 32"	37 80 82	1,414	4,260	1,749
A639-4128S • Soft rectangle • Low level • 12"h x 41" x 28"	37 80 82	1,559	4,727	1,934

Edge 37, 80, 82 = Edge Detail

All prices listed in US \$



dimensions – OH - Overall Height OD - Overall Depth OW - Overall Width AH - Arm Height SH - Seat Height SW - Seat Width SD - Seat Depth



Conic

Standard Metal Finishes



Chrome/
Polished
Aluminum



White



New Black



Soft Gold



Soft Silver



Dark Bronze



Deep Mulberry

Stitch Detail



Railroad Stitch

Stitch Detail Colors



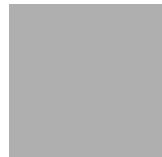
Black



White



Red



Light Gray



Dark Gray

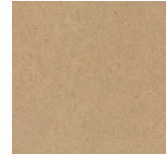


Cream

Conic

Edge Stains

Standard



Clear

Optional



Solid Black



Espresso



Solid White

Standard Metal Finishes



Chrome/
Polished
Aluminum



White



New Black



Soft Gold



Soft Silver

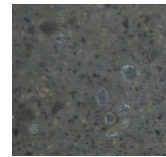


Dark Bronze



Deep Mulberry

Grade A Solid Surfaces Grade A



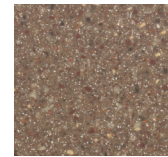
Lava Rock



Cameo White



Linen



Canyon



Nocturne

Global Laminates



Fog



Dark Chocolate



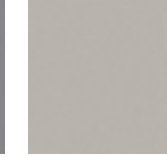
Fossil



Diamond Black



Mouse



Sarum Gray



Storm



Brite White



Chestnut
Woodline



Oiled Walnut



White Ash



Ebony



Smoky Brown
Pear



Millennium Oak



Natural Ash



Planked
Coffee Oak

Non-Stock Table Top Information Ordering Instructions:

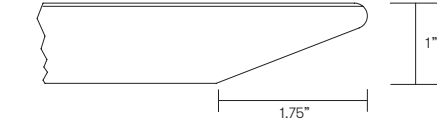
In addition to Allermuir's standard graded-in table top finishes, non-stock laminates and solid surfaces are available.

Please contact US Customer Service to confirm availability and to request pricing.
Phone (419)887.5806
Toll free (888)887.5806

The full product specification is needed at the time of your call including the manufacturer's name, pattern name, product number and finish.

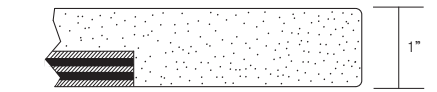
We may require a sample to be mailed to our corporate headquarters to ensure the material meets our quality standards. Allermuir reserves the right to reject any non-stock top material that, in Allermuir's opinion, is unsuitable for application.

Samples can be sent to:
Allermuir
Attn: Internal Sales Support
4111 N. Jerome Road
Maumee, Ohio 43537



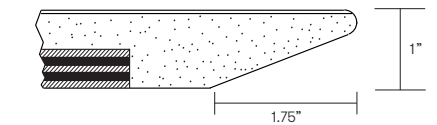
Edge Detail # 37

HPL laminate over a 1" MDF core counter balanced. The edge is cut back with a chamfer. The edge is clear finish as standard or can be stained.



Edge Detail # 80

Solid surface 1" thick backed with hardwood plywood.



Edge Detail # 82

Solid surface 1" thick backed with hardwood plywood.