

Allermuir

FortySeven

allermuir.com

FortySeven - Coffee

Design - Allermuir

These simple, elegant and versatile tables are still constructed with the same meticulous attention to detail and quality but have now been sculpted and crafted to give FortySeven, a softer and more delicate silhouette with ultimate stability in mind.



standard & optional features

- Standard feature
- Not available

	FRSC24RD	FRSC30RD	FRSC36RD	FRSC24SQ	FRSC30SQ	FRSC36SQ
	Round 24" dia	Round 30" dia	Round 36" dia	Square 24" x 24"	Square 30" x 30"	Square 36" x 36"
1" Laminate faced MDF core top with a clear edge profile (38)*	●	●	●	●	●	●
1" Laminate faced MDF core top with contrast edge tape (TE)*, Ply	●	●	●	●	●	●
1" TFL top with matching edge tape	●	●	●	●	●	●
Steel pedestal base finished in Matte Black powder coat	●	●	●	●	●	●
Plastic glides with leveling adjustment	●	●	●	●	●	●
Optional features:						
Table edge profile can be stained in Solid Black, Espresso, and Solid White	+ \$30	+ \$30	+ \$30	+ \$30	+ \$30	+ \$30
Steel pedestal base available in Matte White or Stone powder coat	+ \$0	+ \$0	+ \$0	+ \$0	+ \$0	+ \$0
Contrasting edge tape: Oak, White, Black, or Beech	+ \$0	+ \$0	+ \$0	+ \$0	+ \$0	+ \$0

- * Click here to see available Edge Detail
- * Click here to see FortySeven Metal Finishes
- * Click here to see available Edge Stain Finishes
- * Click here to see available Contrasting Edge Tapes
- * Click here to see available Laminate options

Ships Semi-KD = Knock Down (Needs some assembly)

dimensions — OH - Overall Height OD - Overall Depth OW - Overall Width



[Back to index](#)

Code		Edge	TFL Standard	TFL Premium Colors	TFL Premium Wood Grains	Global Laminates Brite White	Global Laminates Colors/Wood Grains	Fenix
FRSC24RD • Round • 15" h • 24" dia		TE	1,074	1,107	1,161	1,252	1,310	-
		38	-	-	-	1,296	1,353	1,515
FRSC30RD • Round • 15" h • 30" dia		TE	1,100	1,134	1,188	1,336	1,394	-
		38	-	-	-	1,379	1,437	1,691
FRSC36RD • Round • 15" h • 36" dia		TE	1,173	1,209	1,268	1,420	1,476	-
		38	-	-	-	1,460	1,517	1,881

FRSC24SQ • Square • 15" h • 24 x 24"		TE	1,066	1,098	1,152	1,269	1,325	-
		38	-	-	-	1,309	1,372	1,534
FRSC30SQ • Square • 15" h • 30 x 30"		TE	1,091	1,125	1,179	1,374	1,431	-
		38	-	-	-	1,413	1,470	1,724
FRSC36SQ • Square • 15" h • 36 x 36"		TE	1,176	1,212	1,270	1,426	1,492	-
		38	-	-	-	1,463	1,530	1,894

TE = Taped Edge

38 = Profile Edge

All prices listed in US \$



FortySeven - Work Lounge

Design – Allermuir

These simple, elegant and versatile tables are still constructed with the same meticulous attention to detail and quality but have now been sculpted and crafted to give FortySeven, a softer and more delicate silhouette with ultimate stability in mind.



standard & optional features

● Standard feature
□ Not available

	FRSW30SQ Square 30" x 30"	FRSW36SQ Square 36" x 36"	FRSW30RD Round 30" dia	FRSW36RD Round 36" dia
1" Laminate faced MDF core top with a clear edge profile (38)*	●	●	●	●
1" Laminate faced MDF core top with contrast edge tape (TE)*, Ply	●	●	●	●
1" TFL top with matching edge tape	●	●	●	●
Steel pedestal base finished in Matte Black powder coat	●	●	●	●
Plastic glides with leveling adjustment	●	●	●	●

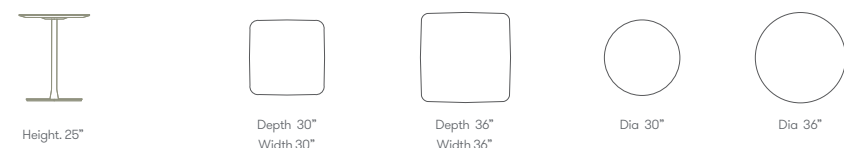
Optional features:

Table edge profile can be stained in Solid Black, Espresso, and Solid White	+ \$30	+ \$30	+ \$30	+ \$30
Steel pedestal base available in Matte White or Stone powder coat	+ \$0	+ \$0	+ \$0	+ \$0
Contrasting edge tape: Oak, White, Black, or Beech	+ \$0	+ \$0	+ \$0	+ \$0

- * [Click here to see available Edge Detail](#)
- * [Click here to see FortySeven Metal Finishes](#)
- * [Click here to see available Edge Stain Finishes](#)
- * [Click here to see available Contrasting Edge Tapes](#)
- * [Click here to see available Laminate options](#)

Ships Semi-KD = Knock Down (Needs some assembly)

dimensions – OH - Overall Height OD - Overall Depth OW - Overall Width



[Back to index](#)

Code		Edge	TFL Standard	TFL Premium Colors	TFL Premium Wood Grains	Global Laminates Brite White	Global Laminates Colors/Wood Grains	Fenix
FRSW30SQ • Square • 25"h • 30 x 30"		TE	1,098	1,132	1,187	1,380	1,437	-
		38	-	-	-	1,420	1,477	1,731
FRSW36SQ • Square • 25"h • 36 x 36"		TE	1,182	1,218	1,278	1,432	1,489	-
		38	-	-	-	1,469	1,526	1,890



FRSW30RD • Round • 25"h • 30" dia		TE	1,107	1,141	1,197	1,342	1,400	-
		38	-	-	-	1,386	1,443	1,697
FRSW36RD • Round • 25"h • 36" dia		TE	1,180	1,216	1,275	1,426	1,483	-
		38	-	-	-	1,467	1,523	1,888



TE = Taped Edge

38 = Profile Edge

All prices listed in US \$

FortySeven - Dining

Design – Allermuir

These simple, elegant and versatile tables are still constructed with the same meticulous attention to detail and quality but have now been sculpted and crafted to give FortySeven, a softer and more delicate silhouette with ultimate stability in mind.



standard & optional features

- Standard feature
- Not available

	FRSD24RD Round 24" dia	FRSD30RD Round 30" dia	FRSD36RD Round 36" dia	FRSD24SQ Square 24" x 24"	FRSD30SQ Square 30" x 30"	FRSD36SQ Square 36" x 36"
1" Laminate faced MDF core top with a clear edge profile (38)*	●	●	●	●	●	●
1" Laminate faced MDF core top with contrast edge tape (TE)*, Ply	●	●	●	●	●	●
1" TFL top with matching edge tape	●	●	●	●	●	●
Steel pedestal base finished in Matte Black powder coat	●	●	●	●	●	●
Plastic glides with leveling adjustment	●	●	●	●	●	●
Optional features:						
Table edge profile can be stained in Solid Black, Espresso, and Solid White	+ \$30	+ \$30	+ \$30	+ \$30	+ \$30	+ \$30
Steel pedestal base available in Matte White or Stone powder coat	+ \$0	+ \$0	+ \$0	+ \$0	+ \$0	+ \$0
Contrasting edge tape: Oak, White, Black, or Beech	+ \$0	+ \$0	+ \$0	+ \$0	+ \$0	+ \$0

- * Click here to see available Edge Detail
- * Click here to see FortySeven Metal Finishes
- * Click here to see available Edge Stain Finishes
- * Click here to see available Contrasting Edge Tapes
- * Click here to see available Laminate options

Ships Semi-KD = Knock Down (Needs some assembly)

dimensions – OH - Overall Height OD - Overall Depth OW - Overall Width



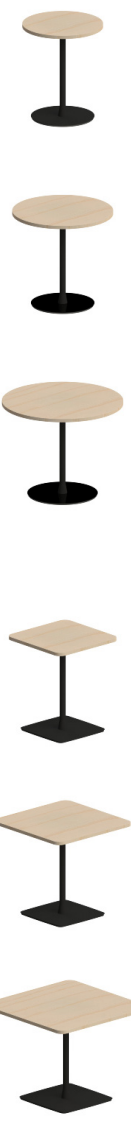
[Back to index](#)

Code		Edge	TFL Standard	TFL Premium Colors	TFL Premium Wood Grains	Global Laminates Brite White	Global Laminates Colors/Wood Grains	Fenix
FRSD24RD • Round • 29" h • 24" dia		TE	1,118	1,152	1,208	1,293	1,350	-
		38	-	-	-	1,337	1,394	1,556
FRSD30RD • Round • 29" h • 30" dia		TE	1,144	1,179	1,236	1,377	1,434	-
		38	-	-	-	1,420	1,478	1,732
FRSD36RD • Round • 29" h • 36" dia		TE	1,217	1,254	1,315	1,460	1,517	-
		38	-	-	-	1,501	1,558	1,922

FRSD24SQ • Square • 29" h • 24 x 24"		TE	1,131	1,165	1,222	1,309	1,366	-
		38	-	-	-	1,350	1,407	1,569
FRSD30SQ • Square • 29" h • 30 x 30"		TE	1,155	1,190	1,248	1,414	1,471	-
		38	-	-	-	1,454	1,511	1,765
FRSD36SQ • Square • 29" h • 36 x 36"		TE	1,227	1,264	1,326	1,467	1,523	-
		38	-	-	-	1,503	1,560	1,925

TE = Taped Edge
38 = Profile Edge

All prices listed in US \$



FortySeven - Dining Rectangular

Design - Allermuir

These simple, elegant and versatile tables are still constructed with the same meticulous attention to detail and quality but have now been sculpted and crafted to give FortySeven, a softer and more delicate silhouette with ultimate stability in mind.



standard & optional features

● Standard feature
□ Not available

	FRSD3024RC Rectangular 30" x 24"	FRSD3624RC Rectangular 36" x 24"	FRSD3630RC Rectangular 36" x 30"	FRSD4230RC Rectangular 42" x 30"	FRSD4236RC Rectangular 42" x 36"
1" Laminate faced MDF core top with a clear edge profile (38)*	●	●	●	●	●
1" Laminate faced MDF core top with contrast edge tape (TE)*, Ply	●	●	●	●	●
1" TFL top with matching edge tape	●	●	●	●	●
Steel pedestal base finished in Matte Black powder coat	●	●	●	●	●
Plastic glides with leveling adjustment	●	●	●	●	●
Optional features:					
Table edge profile can be stained in Solid Black, Espresso, and Solid White	+ \$30	+ \$30	+ \$30	+ \$30	+ \$30
Steel pedestal base available in Matte White or Stone powder coat	+ \$0	+ \$0	+ \$0	+ \$0	+ \$0
Contrasting edge tape: Oak, White, Black, or Beech	+ \$0	+ \$0	+ \$0	+ \$0	+ \$0

- * Click here to see available Edge Detail
- * Click here to see FortySeven Metal Finishes
- * Click here to see available Edge Stain Finishes
- * Click here to see available Contrasting Edge Tapes
- * Click here to see available Laminate options

Ships Semi-KD = Knock Down (Needs some assembly)

[Back to index](#)

Code		Edge	TFL Standard	TFL Premium Colors	TFL Premium Wood Grains	Global Laminates Brite White	Global Laminates Colors/Wood Grains	Fenix
FRSD3024RC • Rectangular • 29"h • 30" x 24"		TE	1,121	1,155	1,211	1,352	1,410	-
		38	-	-	-	1,392	1,449	1,651
FRSD3624RC • Rectangular • 29"h • 36" x 24"		TE	1,187	1,223	1,282	1,421	1,478	-
		38	-	-	-	1,461	1,518	1,761
FRSD3630RC • Rectangular • 29"h • 36" x 30"		TE	1,225	1,262	1,323	1,467	1,523	-
		38	-	-	-	1,503	1,560	1,864
FRSD4230RC • Rectangular • 29"h • 42" x 30"		TE	1,255	1,293	1,356	1,515	1,576	-
		38	-	-	-	1,559	1,622	1,977
FRSD4236RC • Rectangular • 29"h • 42" x 36"		TE	1,271	1,310	1,373	1,539	1,602	-
		38	-	-	-	1,586	1,657	2,083

TE = Taped Edge
38 = Profile Edge

All prices listed in US \$



dimensions — OH - Overall Height OD - Overall Depth OW - Overall Width



Height: 29"



Depth 30"
Width 24"



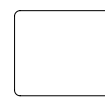
Depth 36"
Width 24"



Depth 36"
Width 30"



Depth 42"
Width 30"



Depth 42"
Width 36"

FortySeven - Dining Rectangular

Design - Allermuir

These simple, elegant and versatile tables are still constructed with the same meticulous attention to detail and quality but have now been sculpted and crafted to give FortySeven, a softer and more delicate silhouette with ultimate stability in mind.



standard & optional features

- Standard feature
- Not available

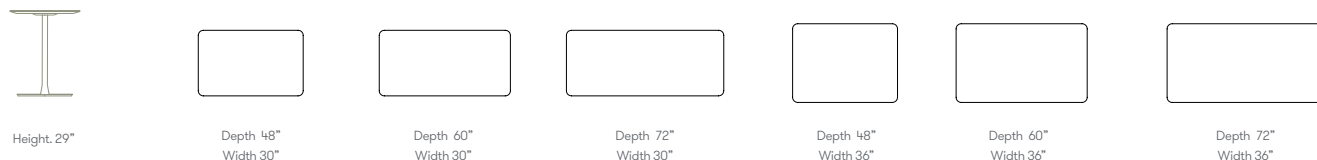
FRSD4830RC FRSD6030RC FRSD7230RC FRSD4836RC FRSD6036RC FRSD7236RC

	Rectangular 48" x 30"	Rectangular 60" x 30"	Rectangular 72" x 30"	Rectangular 48" x 36"	Rectangular 60" x 36"	Rectangular 72" x 36"
1" Laminate faced MDF core top with a clear edge profile (38)*	●	●	●	●	●	●
1" Laminate faced MDF core top with contrast edge tape (TE)*, Ply	●	●	●	●	●	●
1" TFL top with matching edge tape	●	●	●	●	●	●
Steel pedestal base finished in Matte Black powder coat	●	●	●	●	●	●
Plastic glides with leveling adjustment	●	●	●	●	●	●
Optional features:						
Table edge profile can be stained in Solid Black, Espresso, and Solid White	+ \$30	+ \$30	+ \$30	+ \$30	+ \$30	+ \$30
Steel pedestal base available in Matte White or Stone powder coat	+ \$0	+ \$0	+ \$0	+ \$0	+ \$0	+ \$0
Contrasting edge tape: Oak, White, Black, or Beech	+ \$0	+ \$0	+ \$0	+ \$0	+ \$0	+ \$0

- * Click here to see available Edge Detail
- * Click here to see FortySeven Metal Finishes
- * Click here to see available Edge Stain Finishes
- * Click here to see available Contrasting Edge Tapes
- * Click here to see available Laminate options

Ships Semi-KD = Knock Down (Needs some assembly)

dimensions — OH - Overall Height OD - Overall Depth OW - Overall Width



[Back to index](#)

Code	Edge	TFL Standard	TFL Premium Colors	TFL Premium Wood Grains	Global Laminates Brite White	Global Laminates Colors/Wood Grains	Fenix
FRSD4830RC • Rectangular • 29" h • 48" x 30"	TE	2,174	2,240	2,349	2,325	2,382	-
	38	-	-	-	2,360	2,417	3,822
FRSD6030RC • Rectangular • 29" h • 60" x 30"	TE	2,203	2,269	2,379	2,637	3,752	-
	38	-	-	-	2,688	2,820	3,327
FRSD7230RC • Rectangular • 29" h • 72" x 30"	TE	2,248	2,315	2,428	2,895	2,996	-
	38	-	-	-	2,942	3,042	3,650
FRSD4836RC • Rectangular • 29" h • 48" x 36"	TE	2,196	2,262	2,372	2,378	2,492	-
	38	-	-	-	2,430	2,544	3,030
FRSD6036RC • Rectangular • 29" h • 60" x 36"	TE	2,246	2,313	2,426	2,639	2,931	-
	38	-	-	-	2,857	2,974	3,582
FRSD7236RC • Rectangular • 29" h • 72" x 36"	TE	2,279	2,348	2,462	2,897	3,010	-
	38	-	-	-	3,021	3,056	3,785

TE = Taped Edge
38 = Profile Edge

All prices listed in US \$



FortySeven - High

Design – Allermuir

These simple, elegant and versatile tables are still constructed with the same meticulous attention to detail and quality but have now been sculpted and crafted to give FortySeven, a softer and more delicate silhouette with ultimate stability in mind.



standard & optional features

● Standard feature
□ Not available

	FRSP24SQ Square 24" x 24"	FRSP30SQ Square 30" x 30"	FRSP24RD Round 24" dia	FRSP30RD Round 30" dia	FRSP36RD Round 36" dia
1" Laminate faced MDF core top with a clear edge profile (38)*	●	●	●	●	●
1" Laminate faced MDF core top with contrast edge tape (TE)*, Ply	●	●	●	●	●
1" TFL top with matching edge tape	●	●	●	●	●
Steel pedestal base finished in Matte Black powder coat	●	●	●	●	●
Plastic glides with leveling adjustment	●	●	●	●	●
Optional features:					
Table edge profile can be stained in Solid Black, Espresso, and Solid White	+ \$30	+ \$30	+ \$30	+ \$30	+ \$30
Steel pedestal base available in Matte White or Stone powder coat	+ \$0	+ \$0	+ \$0	+ \$0	+ \$0
Contrasting edge tape: Oak, White, Black, or Beech	+ \$0	+ \$0	+ \$0	+ \$0	+ \$0

- * Click here to see available Edge Detail
- * Click here to see FortySeven Metal Finishes
- * Click here to see available Edge Stain Finishes
- * Click here to see available Contrasting Edge Tapes
- * Click here to see available Laminate options

Ships Semi-KD = Knock Down (Needs some assembly)

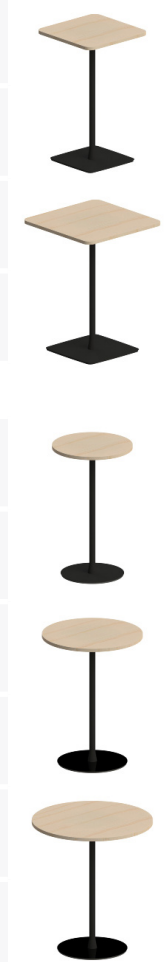
[Back to index](#)

Code		Edge	TFL Standard	TFL Premium Colors	TFL Premium Wood Grains	Global Laminates Brite White	Global Laminates Colors/Wood Grains	Fenix
FRSP24SQ • Square • 40"h • 24 x 24"		TE	1,149	1,184	1,242	1,326	1,383	-
		38	-	-	-	1,367	1,423	1,585
FRSP30SQ • Square • 40"h • 30 x 30"		TE	1,177	1,213	1,271	1,431	1,488	-
		38	-	-	-	1,471	1,528	1,782

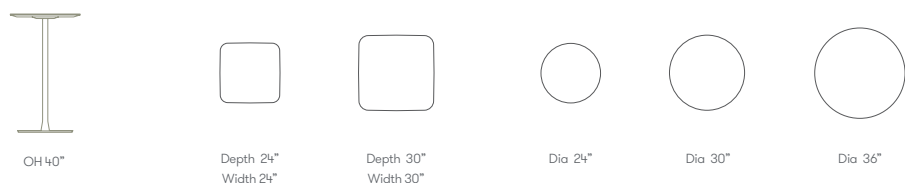
FRSP24RD • Round • 40"h • 24" dia		TE	1,137	1,171	1,229	1,310	1,368	-
		38	-	-	-	1,354	1,411	1,573
FRSP30RD • Round • 40"h • 30" dia		TE	1,163	1,198	1,257	1,394	1,451	-
		38	-	-	-	1,437	1,494	1,748
FRSP36RD • Round • 40"h • 36" dia		TE	1,236	1,274	1,335	1,477	1,534	-
		38	-	-	-	1,518	1,575	1,939

TE = Taped Edge
38 = Profile Edge

All prices listed in US \$



dimensions – OH - Overall Height OD - Overall Depth OW - Overall Width



FortySeven - Counter

Design - Allermuir

These simple, elegant and versatile tables are still constructed with the same meticulous attention to detail and quality but have now been sculpted and crafted to give FortySeven, a softer and more delicate silhouette with ultimate stability in mind.



standard & optional features

● Standard feature
 □ Not available

	FRSCH24SQ Square 24" x 24"	FRSCH30SQ Square 30" x 30"	FRSCH24RD Round 24" dia	FRSCH30RD Round 30" dia	FRSCH36RD Round 36" dia
1" Laminate faced MDF core top with a clear edge profile (38)*	●	●	●	●	●
1" Laminate faced MDF core top with contrast edge tape (TE)*, Ply	●	●	●	●	●
1" TFL top with matching edge tape	●	●	●	●	●
Steel pedestal base finished in Matte Black powder coat	●	●	●	●	●
Plastic glides with leveling adjustment	●	●	●	●	●
Optional features:					
Table edge profile can be stained in Solid Black, Espresso, and Solid White	+ \$30	+ \$30	+ \$30	+ \$30	+ \$30
Steel pedestal base available in Matte White or Stone powder coat	+ \$0	+ \$0	+ \$0	+ \$0	+ \$0
Contrasting edge tape: Oak, White, Black, or Beech	+ \$0	+ \$0	+ \$0	+ \$0	+ \$0

- * Click here to see available Edge Detail
- * Click here to see FortySeven Metal Finishes
- * Click here to see available Edge Stain Finishes
- * Click here to see available Contrasting Edge Tapes
- * Click here to see available Laminate options

Ships Semi-KD = Knock Down (Needs some assembly)

[Back to index](#)

Code		Edge	TFL Standard	TFL Premium Colors	TFL Premium Wood Grains	Global Laminates Brite White	Global Laminates Colors/Wood Grains	Fenix
FRSCH24SQ • Square • 36"h • 24 x 24"		TE	1,144	1,179	1,236	1,322	1,378	-
		38	-	-	-	1,362	1,419	1,581
FRSCH30SQ • Square • 36"h • 30 x 30"		TE	1,173	1,209	1,267	1,427	1,484	-
		38	-	-	-	1,467	1,524	1,778

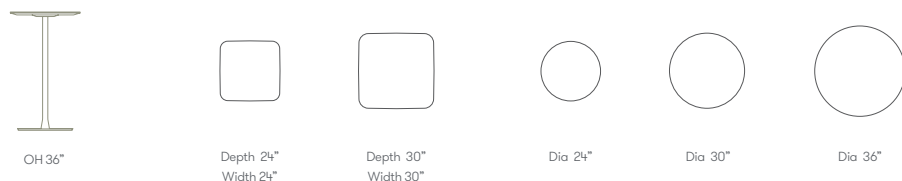
FRSCH24RD • Round • 36"h • 24" dia		TE	1,133	1,167	1,225	1,306	1,364	-
		38	-	-	-	1,350	1,407	1,569
FRSCH30RD • Round • 36"h • 30" dia		TE	1,158	1,193	1,250	1,389	1,446	-
		38	-	-	-	1,432	1,490	1,744
FRSCH36RD • Round • 36"h • 36" dia		TE	1,231	1,269	1,330	1,472	1,529	-
		38	-	-	-	1,513	1,570	1,935

TE = Taped Edge
 38 = Profile Edge

All prices listed in US \$



dimensions — OH - Overall Height OD - Overall Depth OW - Overall Width



FortySevenXL - Work Lounge

Design – Allermuir

These simple, elegant and versatile tables are still constructed with the same meticulous attention to detail and quality but have now been sculpted and crafted to give FortySevenXL, a softer and more delicate silhouette with ultimate stability in mind.



standard & optional features

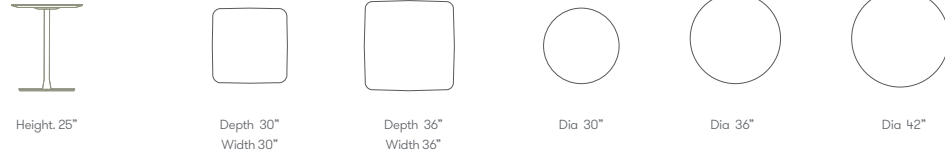
- Standard feature
- Not available

	FRSXLW30SQ	FRSXLW36SQ	FRSXLW30RD	FRSXLW36RD	FRSXLW42RD
	Square 30" x 30"	Square 36" x 36"	Round 30" dia	Round 36" dia	Round 42" dia
1" Laminate faced MDF core top with a clear edge profile (38)*, No Cutout	●	●	●	●	●
1" Laminate faced MDF core top with contrast edge tape (TE)*, Ply, No Cutout	●	●	●	●	●
1" TFL top with matching edge tape	●	●	●	●	●
Steel pedestal base finished in Matte Black powder coat	●	●	●	●	●
Plastic glides with leveling adjustment	●	●	●	●	●
Optional features:					
Table edge profile can be stained in Solid Black, Espresso, and Solid White	+ \$30	+ \$30	+ \$30	+ \$30	+ \$30
Steel pedestal base available in Matte White or Stone powder coat	+ \$0	+ \$0	+ \$0	+ \$0	+ \$0
Contrasting edge tape: Oak, White, Black, or Beech	+ \$0	+ \$0	+ \$0	+ \$0	+ \$0
3" Cutout with Black Cable Port, No Power	+ \$0	+ \$0	+ \$0	+ \$0	+ \$0
Central Power: x1 US Socket, x1 USB A+C @ 25w, x1 Starter	+ \$526	+ \$526	+ \$526	+ \$526	+ \$526

- * [Click here to see available Edge Detail](#)
- * [Click here to see FortySeven Metal Finishes](#)
- * [Click here to see available Edge Stain Finishes](#)
- * [Click here to see available Contrasting Edge Tapes](#)
- * [Click here to see available Laminate options](#)

Ships Semi-KD = Knock Down (Needs some assembly)

dimensions – OH - Overall Height OD - Overall Depth OW - Overall Width



[Back to index](#)

Code		Edge	TFL Standard	TFL Premium Colors	TFL Premium Wood Grains	Global Laminates Brite White	Global Laminates Colors/Wood Grains	Fenix
FRSXLW30SQ • Square • 25" h • 30" x 30"		TE	1,277	1,315	1,379	1,544	1,601	-
		38	-	-	-	1,584	1,640	1,894
FRSXLW36SQ • Square • 25" h • 36" x 36"		TE	1,366	1,407	1,476	1,601	1,657	-
		38	-	-	-	1,638	1,695	2,060
FRSXLW30RD • Round • 25" h • 30" dia		TE	1,269	1,307	1,370	1,491	1,548	-
		38	-	-	-	1,534	1,591	1,845
FRSXLW36RD • Round • 25" h • 36" dia		TE	1,351	1,393	1,460	1,584	1,640	-
		38	-	-	-	1,624	1,681	2,045
FRSXLW42RD • Round • 25" h • 42" dia		TE	1,540	1,587	1,664	1,821	1,880	-
		38	-	-	-	1,878	1,935	2,431

TE = Taped Edge
38 = Profile Edge

All prices listed in US \$



FortySevenXL - Dining

Design – Allermuir

These simple, elegant and versatile tables are still constructed with the same meticulous attention to detail and quality but have now been sculpted and crafted to give FortySevenXL, a softer and more delicate silhouette with ultimate stability in mind.



standard & optional features

- Standard feature
- Not available

	FRSXLD30RD Round 30" dia	FRSXLD36RD Round 36" dia	FRSXLD42RD Round 42" dia	FRSXLD48RD Round 48" dia
1" Laminate faced MDF core top with a clear edge profile (38)*, No Cutout	●	●	●	●
1" Laminate faced MDF core top with contrast edge tape (TE)*, Ply, No Cutout	●	●	●	●
1" TFL top with matching edge tape	●	●	●	●
Steel pedestal base finished in Matte Black powder coat	●	●	●	●
Plastic glides with leveling adjustment	●	●	●	●

Optional features:

Table edge profile can be stained in Solid Black, Espresso, and Solid White	+ \$30	+ \$30	+ \$30	+ \$30
Steel pedestal base available in Matte White or Stone powder coat	+ \$0	+ \$0	+ \$0	+ \$0
Contrasting edge tape: Oak, White, Black, or Beech	+ \$0	+ \$0	+ \$0	+ \$0
3" Cutout with Black Cable Port, No Power	+ \$0	+ \$0	+ \$0	+ \$0
Central Power: x1 US Socket, x1 USB A+C @ 25w, x1 Starter Cable per pack.	+ \$526	+ \$526	+ \$526	+ \$526

- * [Click here to see available Edge Detail](#)
- * [Click here to see FortySeven Metal Finishes](#)
- * [Click here to see available Edge Stain Finishes](#)
- * [Click here to see available Contrasting Edge Tapes](#)
- * [Click here to see available Laminate options](#)

Ships Semi-KD = Knock Down (Needs some assembly)

dimensions – OH - Overall Height OD - Overall Depth OW - Overall Width



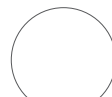
Height: 29"



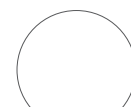
Dia 30"



Dia 36"



Dia 42"



Dia 48"

[Back to index](#)

Code		Edge	TFL Standard	TFL Premium Colors	TFL Premium Wood Grains	Global Laminates Brite White	Global Laminates Colors/Wood Grains	Fenix
FRSXLD30RD • Round • 29" h • 30" dia		TE	1,279	1,318	1,382	1,501	1,558	-
		38	-	-	-	1,544	1,610	1,863
FRSXLD36RD • Round • 29" h • 36" dia		TE	1,363	1,404	1,473	1,593	1,651	-
		38	-	-	-	1,635	1,692	2,056
FRSXLD42RD • Round • 29" h • 42" dia		TE	1,552	1,599	1,676	1,831	1,889	-
		38	-	-	-	1,888	1,944	2,441
FRSXLD48RD • Round • 29" h • 48" dia		TE	1,603	1,652	1,732	1,914	1,970	-
		38	-	-	-	1,970	2,023	2,671

TE = Taped Edge
38 = Profile Edge

All prices listed in US \$



FortySevenXL - Dining

Design – Allermuir

These simple, elegant and versatile tables are still constructed with the same meticulous attention to detail and quality but have now been sculpted and crafted to give FortySevenXL, a softer and more delicate silhouette with ultimate stability in mind.



standard & optional features

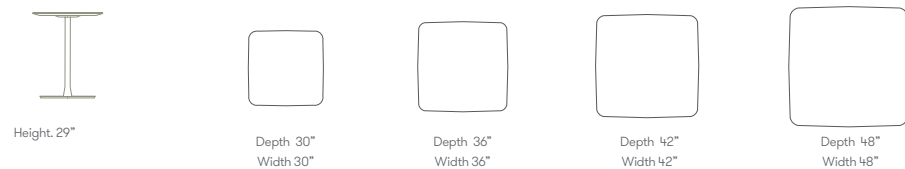
● Standard feature
 □ Not available

	FRSXLD30SQ Square 30" x 30"	FRSXLD36SQ Square 36" x 36"	FRSXLD42SQ Square 42" x 42"	FRSXLD48SQ Square 48" x 48"
1" Laminate faced MDF core top with a clear edge profile (38)*, No Cutout	●	●	●	●
1" Laminate faced MDF core top with contrast edge tape (TE)*, Ply, No Cutout	●	●	●	●
1" TFL top with matching edge tape	●	●	●	●
Steel pedestal base finished in Matte Black powder coat	●	●	●	●
Plastic glides with leveling adjustment	●	●	●	●
Optional features:				
Table edge profile can be stained in Solid Black, Espresso, and Solid White	+ \$30	+ \$30	+ \$30	+ \$30
Steel pedestal base available in Matte White or Stone powder coat	+ \$0	+ \$0	+ \$0	+ \$0
Contrasting edge tape: Oak, White, Black, or Beech	+ \$0	+ \$0	+ \$0	+ \$0
3" Cutout with Black Cable Port, No Power	+ \$0	+ \$0	+ \$0	+ \$0
Central Power: x1 US Socket, x1 USB A+C @ 25w, x1 Starter Cable per pack.	+ \$526	+ \$526	+ \$526	+ \$526

- * Click here to see available Edge Detail
- * Click here to see FortySeven Metal Finishes
- * Click here to see available Edge Stain Finishes
- * Click here to see available Contrasting Edge Tapes
- * Click here to see available Laminate options

Ships Semi-KD = Knock Down (Needs some assembly)

dimensions – OH - Overall Height OD - Overall Depth OW - Overall Width



[Back to index](#)

Code		Edge	TFL Standard	TFL Premium Colors	TFL Premium Wood Grains	Global Laminates Brite White	Global Laminates Colors/Wood Grains	Fenix	
FRSXLD30SQ • Square • 29"h • 30" x 30"		TE	1,287	1,326	1,391	1,554	1,611	-	
		38	-	-	-	1,593	1,650	1,904	
FRSXLD36SQ • Square • 29"h • 36" x 36"		TE	1,377	1,419	1,488	1,611	1,668	-	
		38	-	-	-	1,647	1,704	2,069	
FRSXLD42SQ • Square • 29"h • 42" x 42"		TE	1,579	1,627	1,706	1,854	1,911	-	
		38	-	-	-	1,906	1,962	2,459	
FRSXLD48SQ • Square • 29"h • 48" x 48"		TE	1,620	1,668	1,749	1,942	1,997	-	
		38	-	-	-	1,997	2,050	2,698	

TE = Taped Edge
 38 = Profile Edge

All prices listed in US \$

FortySevenXL - Dining Rectangular

Design - Allermuir

These simple, elegant and versatile tables are still constructed with the same meticulous attention to detail and quality but have now been sculpted and crafted to give FortySevenXL, a softer and more delicate silhouette with ultimate stability in mind.



standard & optional features

- Standard feature
- Not available

	FRSXLD4236RC Rectangular 42" x 36"	FRSXLD4836RC Rectangular 48" x 36"	FRSXLD4842RC Rectangular 48" x 42"
1" Laminate faced MDF core top with a clear edge profile (38)*, No Cutout	●	●	●
1" Laminate faced MDF core top with contrast edge tape (TE)*, Ply, No Cutout	●	●	●
1" TFL top with matching edge tape	●	●	●
Steel pedestal base finished in Matte Black powder coat	●	●	●
Plastic glides with leveling adjustment	●	●	●
Optional features:			
Table edge profile can be stained in Solid Black, Espresso, and Solid White	+ \$30	+ \$30	+ \$30
Steel pedestal base available in Matte White or Stone powder coat	+ \$0	+ \$0	+ \$0
Contrasting edge tape: Oak, White, Black, or Beech	+ \$0	+ \$0	+ \$0
3" Cutout with Black Cable Port, No Power	+ \$0	+ \$0	+ \$0
Central Power: x1 US Socket, x1 USB A+C @ 25w, x1 Starter Cable per pack.	+ \$526	+ \$526	+ \$526

- * Click here to see available Edge Detail
- * Click here to see FortySeven Metal Finishes
- * Click here to see available Edge Stain Finishes
- * Click here to see available Contrasting Edge Tapes
- * Click here to see available Laminate options

Ships Semi-KD = Knock Down (Needs some assembly)

dimensions — OH - Overall Height OD - Overall Depth OW - Overall Width



Height: 29"



Depth 42"
Width 36"



Depth 48"
Width 36"



Depth 48"
Width 42"

[Back to index](#)

Code		Edge	TFL Standard	TFL Premium Colors	TFL Premium Wood Grains	Global Laminates Brite White	Global Laminates Colors/Wood Grains	Fenix
FRSXLD4236RC • Rectangular • 29"h • 42" x 36"		TE	1,608	1,656	1,737	1,812	1,869	-
		38	-	-	-	1,865	1,923	2,349
FRSXLD4836RC • Rectangular • 29"h • 48" x 36"		TE	1,625	1,674	1,755	1,899	1,955	-
		38	-	-	-	1,950	2,007	2,493
FRSXLD4842RC • Rectangular • 29"h • 48" x 42"		TE	1,647	1,696	1,779	1,900	2,015	-
		38	-	-	-	1,979	2,077	2,644

TE = Taped Edge
38 = Profile Edge

All prices listed in US \$



FortySevenXL - Dining Rectangular

Design - Allermuir

These simple, elegant and versatile tables are still constructed with the same meticulous attention to detail and quality but have now been sculpted and crafted to give FortySevenXL, a softer and more delicate silhouette with ultimate stability in mind.



standard & optional features

- Standard feature
- Not available

	FRSXLD6036RC Rectangular 60" x 36"	FRSXLD7236RC Rectangular 72" x 36"	FRSXLD8436RC Rectangular 84" x 36"	FRSXLD9636RC Rectangular 90" x 36"
1" Laminate faced MDF core top with a clear edge profile (38)*, No Cutouts	●	●	●	●
1" Laminate faced MDF core top with contrast edge tape (TE)*, Ply, No Cutouts	●	●	●	●
1" TFL top with matching edge tape	●	●	●	●
Steel pedestal base finished in Matte Black powder coat	●	●	●	●
Plastic glides with leveling adjustment	●	●	●	●
Optional features:				
Table edge profile can be stained in Solid Black, Espresso, and Solid White	+ \$30	+ \$30	+ \$30	+ \$30
Steel pedestal base available in Matte White or Stone powder coat	+ \$0	+ \$0	+ \$0	+ \$0
Contrasting edge tape: Oak, White, Black, or Beech	+ \$0	+ \$0	+ \$0	+ \$0
3" Cutouts with Black Cable Port (2x), No Power	+ \$0	+ \$0	+ \$0	+ \$0
Pack of 2 - Central Power: x1 US Socket, x1 USB A+C @ 25w, x1 Starter Cable per pack.	+ \$1,052	+ \$1,052	+ \$1,052	+ \$1,052

- * [Click here to see available Edge Detail](#)
- * [Click here to see FortySeven Metal Finishes](#)
- * [Click here to see available Edge Stain Finishes](#)
- * [Click here to see available Contrasting Edge Tapes](#)
- * [Click here to see available Laminate options](#)

Ships Semi-KD = Knock Down (Needs some assembly)

dimensions — OH - Overall Height OD - Overall Depth OW - Overall Width



[Back to index](#)

Code	Edge	TFL Standard	TFL Premium Colors	TFL Premium Wood Grains	Global Laminates Brite White	Global Laminates Colors/Wood Grains	Fenix
FRSXLD6036RC • Rectangular • 29" h • 60" x 36"	TE	2,561	2,638	2,766	2,928	3,042	-
	38	-	-	-	2,977	3,091	3,699
FRSXLD7236RC • Rectangular • 29" h • 72" x 36"	TE	2,594	2,673	2,802	3,186	3,299	-
	38	-	-	-	3,231	3,345	4,074
FRSXLD8436RC • Rectangular • 29" h • 84" x 36"	TE	2,641	2,721	2,853	3,230	3,344	-
	38	-	-	-	3,286	3,400	4,250
FRSXLD9636RC • Rectangular • 29" h • 96" x 36"	TE	2,674	2,755	2,889	3,295	3,438	-
	38	-	-	-	3,368	3,493	4,465

TE = Taped Edge
38 = Profile Edge

All prices listed in US \$



FortySevenXL - Dining Rectangular

Design - Allermuir

These simple, elegant and versatile tables are still constructed with the same meticulous attention to detail and quality but have now been sculpted and crafted to give FortySevenXL, a softer and more delicate silhouette with ultimate stability in mind.



standard & optional features

- Standard feature
- Not available

	FRSXLD6042RC Rectangular 60" x 42"	FRSXLD7242RC Rectangular 72" x 42"	FRSXLD8442RC Rectangular 84" x 42"	FRSXLD9642RC Rectangular 96" x 42"
1" Laminate faced MDF core top with a clear edge profile (38)*, No Cutouts	●	●	●	●
1" Laminate faced MDF core top with contrast edge tape (TE)*, Ply, No Cutouts	●	●	●	●
1" TFL top with matching edge tape	●	●	●	●
Steel pedestal base finished in Matte Black powder coat	●	●	●	●
Plastic glides with leveling adjustment	●	●	●	●
Optional features:				
Table edge profile can be stained in Solid Black, Espresso, and Solid White	+ \$30	+ \$30	+ \$30	+ \$30
Steel pedestal base available in Matte White or Stone powder coat	+ \$0	+ \$0	+ \$0	+ \$0
Contrasting edge tape: Oak, White, Black, or Beech	+ \$0	+ \$0	+ \$0	+ \$0
3" Cutouts with Black Cable Port (2x), No Power	+ \$0	+ \$0	+ \$0	+ \$0
Pack of 2 - Central Power: x1 US Socket, x1 USB A+C @ 25w, x1 Starter Cable per pack.	+ \$1,052	+ \$1,052	+ \$1,052	+ \$1,052

- * Click here to see available Edge Detail
- * Click here to see FortySeven Metal Finishes
- * Click here to see available Edge Stain Finishes
- * Click here to see available Contrasting Edge Tapes
- * Click here to see available Laminate options

Ships Semi-KD = Knock Down (Needs some assembly)

dimensions — OH - Overall Height OD - Overall Depth OW - Overall Width



Height: 29"



Depth 60"
Width 42"



Depth 72"
Width 42"



Depth 84"
Width 42"



Depth 96"
Width 42"

[Back to index](#)

Code	Edge	TFL Standard	TFL Premium Colors	TFL Premium Wood Grains	Global Laminates Brite White	Global Laminates Colors/Wood Grains	Fenix
FRSXLD6042RC • Rectangular • 29"h • 60" x 42"	TE	2,904	2,991	3,137	3,310	3,333	-
	38	-	-	-	3,267	3,381	4,090
FRSXLD7242RC • Rectangular • 29"h • 72" x 42"	TE	2,955	3,044	3,192	3,476	3,591	-
	38	-	-	-	3,520	3,629	4,480
FRSXLD8442RC • Rectangular • 29"h • 84" x 42"	TE	2,994	3,084	3,234	3,521	3,635	-
	38	-	-	-	3,576	3,690	4,682
FRSXLD9642RC • Rectangular • 29"h • 96" x 42"	TE	3,033	3,124	3,276	3,611	3,739	-
	38	-	-	-	3,663	3,796	4,930

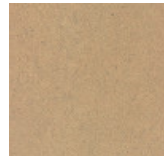
TE = Taped Edge
38 = Profile Edge

All prices listed in US \$



Edge Stains

Standard



Clear

Optional



Solid Black

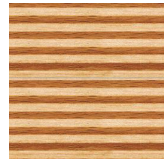


Espresso



Solid White

Contrast Edge Tapes



Ply



Oak



Beech



White



Black

Metal Finishes



Black powder coat



Matte White powder coat

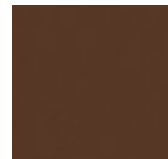


Stone powder coat

Global Laminates



Fog



Dark Chocolate



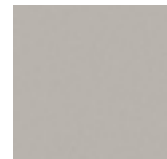
Fossil



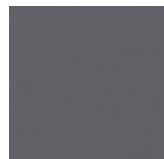
Diamond Black



Mouse



Sarum Gray



Storm



Brite White



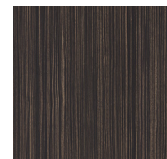
Chestnut Woodline



Oiled Walnut



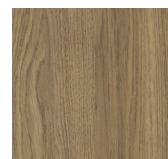
White Ash



Ebony



Smoky Brown Pear



Millennium Oak



Natural Ash



Planked Coffee Oak

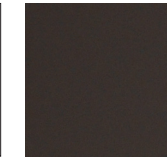
Fenix Laminates



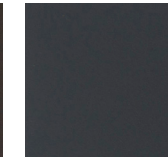
Beige Arizona



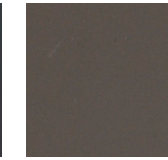
Bianco Kos



Grigio Aragona



Grigio Bromo

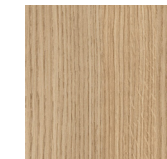


Grigio Londra

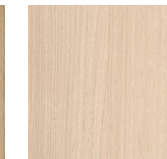


Nero Ingo

TFL Standard



Strata Oak



Urban Maple



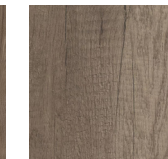
White



Greige Castella Oak



Dark Rockford Hickory



Winter Oak

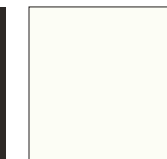


Light Gray

TFL Premium Colors



Basalt



Premium White



Premium Black



Taupe Gray



Slate Gray



Cobalt Gray



Alby Blue

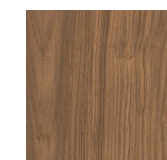


Smoke Green



Deep Sahara

TFL Premium Wood Grains



Brown Casella Oak



Natural Casella Oak



Light Casella Oak



Black Casella Oak

Non-Stock Table Top Information Ordering Instructions:

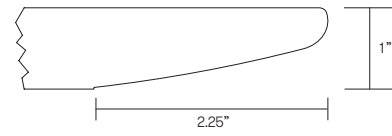
In addition to Allermuir's standard graded-in table top finishes, non-stock laminates and solid surfaces are available.

Please contact US Customer Service to confirm availability and to request pricing.
Phone (419)887.5806
Toll free (888)887.5806

The full product specification is needed at the time of your call including the manufacturer's name, pattern name, product number and finish

We may require a sample to be mailed to our corporate headquarters to ensure the material meets our quality standards. Allermuir reserves the right to reject any non-stock top material that, in Allermuir's opinion, is unsuitable for application.

Samples can be sent to:
Allermuir
Attn: Internal Sales Support
4111 N. Jerome Road
Maumee, Ohio 43537



Edge Detail # 38

HPL laminate over a 1" MDF core counter balanced. The edge is cut back with a chamfer. The edge is clear finish as standard or can be stained.