

Pause – Low Level Tables

Design –Allermuir

The Pause range of tables encompasses dining height, high and low level tables, all of which have been carefully balanced to provide a variety of comfortable resting points. Pause tables have been designed to work with the Pause seating range, but also sit well with a variety of Allermuir products.



standard & optional features

- Standard feature
- Not available

	PST156 Coffee table Rectangle 59"/24"	PST157 Coffee table Rectangle 59"/30"	PST075 Coffee table Square 30"/30"
Weight	77lbs	80lbs	48lbs
3" laminate faced top*	●	●	●
Tubular steel frame finished in Silver M04 powder coat *1	●	●	●
Plastic glides with leveling adjustment	●	●	●
Optional features:			
Tubular steel frame available in Polished Chrome	+ \$80	+ \$80	+ \$80

- * [Click here to see available Edge Details](#)
- * [Click here to see available Laminate Options](#)
- * [Click here to see available Table Metal Finishes](#)
- * [Click here to see Non-Stock Table Top Information](#)

Note: Linoleum & Solid Surfaces priced upon request

Code	Edge	Laminates			
		A	B		
PST156 • Rectangle • 13"h x 59"w x 24"d		76	1251	1393	
PST157 • Rectangle • 13"h x 59"w x 30"d		76	1342	1495	
● PST075 • Square • 13"h x 30"w x 30"d		76	1012	1122	

A, B = Grade A & B Laminate Range

All prices listed in US \$

Edge 76 = Edge Detail

- Quickship Standard Features (*Selected Models Only)
- Tubular steel frame in Polished Chrome
 - Plastic glides with leveling adjustment*
 - 3" Laminate faced top
 - Max quantity: 10

dimensions— OH - Overall Height OD - Overall Depth OW - Overall Width



Pause – Dining Height & High Tables

Design -Allermuir

The Pause range of tables encompasses dining height, high and low level tables, all of which have been carefully balanced to provide a variety of comfortable resting points. Pause tables have been designed to work with the Pause seating range, but also sit well with a variety of Allermuir products.



standard & optional features

- Standard feature
- Not available

	PST166L	PST167L	PST226L	PST227L	PST165H	PST225H
	Dining Table Rectangle 63" x 24"	Dining Table Rectangle 63" x 30"	Dining Table Rectangle 86.5" x 24"	Dining Table Rectangle 86.5" x 30"	High Table Rectangle 63" x 19.75"	High Table Rectangle 86.5" x 19.75"
Weight	56lbs	121lbs	77lbs	153lbs	98lbs	122lbs
3" laminate faced top	●	●	●	●	●	●
Tubular steel frame finished in Silver M04 powder coat *1	●	●	●	●	●	●
Plastic glides with leveling adjustment	●	●	●	●	●	●
Optional features:						
Tubular steel frame available in Polished Chrome	+ \$105	+ \$129	+ \$149	+ \$169	+ \$135	+ \$159

- * [Click here to see available Edge Details](#)
 - * [Click here to see available Laminate Options](#)
 - * [Click here to see available Table Metal Finishes](#)
 - * [Click here to see Non-Stock Table Top Information](#)
- Note: Linoleum & Solid Surfaces priced upon request**

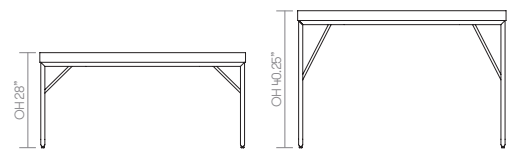
Code	Edge	Laminate	
		A	B
PST166L • Rectangle • 28"h x 63"w x 24"d		1871	2088
PST167L • Rectangle • 28"h x 63"w x 30"d		1986	2214
PST226L • Rectangle • 28"h x 86.5"w x 24"d		2043	2275
PST227L • Rectangle • 28"h x 86.5"w x 30"d		2353	2617
PST165H • Rectangle • 40.25"h x 63"w x 19.75"d		1206	1339
PST225H • Rectangle • 40.25"h x 86.5"w x 19.75"d		2113	2355



A, B = Grade A & B Laminate Range
 Edge 76 = Edge Detail

All prices listed in US \$

dimensions— OH - Overall Height OD - Overall Depth OW - Overall Width



Standard Metal Finishes



Polished Chrome



Silver M04 Powder Coat

Grade A Laminates

Grade A - Formica



Fog



Dark Chocolate



Fossil



Black



Mouse



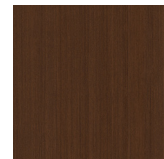
Platinum



Storm



White



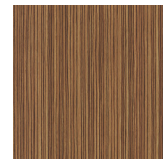
Chestnut Woodline



Oiled Walnut



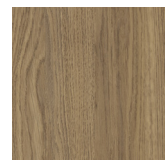
White Ash



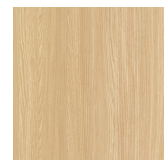
Zebrano



Smoky Brown Pear



Millenium Oak



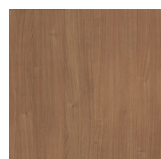
Natural Ash



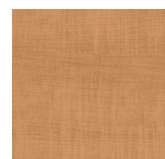
Seasoned Planked Elm

Grade B Laminates

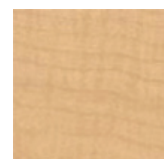
Grade B - Wilsonart



River Cherry



Monticello Maple



Fusion Maple



Black



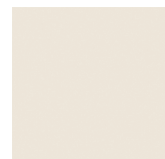
Coffee Bean



North Sea



Shadow



Wallaby



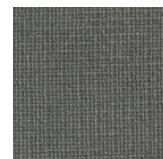
Dove Gray



Fashion Gray



Designer White



Steel Mesh



Pewter Mesh



Gilded Mesh



Gray Mesh

Non-Stock Table Top Information Ordering Instructions:

In addition to Allermuir's standard graded-in table top finishes, non-stock laminates and solid surfaces are available.



Edge Detail # 76
HPL laminate face and 3" built down edge

Please contact US Customer Service to confirm availability and to request pricing.
Phone (419)887.5806
Toll free (888)887.5806

The full product specification is needed at the time of your call including the manufacturer's name, pattern name, product number and finish.

We may require a sample to be mailed to our corporate headquarters to ensure the material meets our quality standards. Allermuir reserves the right to reject any non-stock top material that, in Allermuir's opinion, is unsuitable for application.

Samples can be sent to:
Allermuir
Attn: Internal Sales Support
4111 N. Jerome Road
Maumee, Ohio 43537