

Famiglia – Work Tables

Design – PearsonLloyd

Famiglia’s work tables, designed for ad-hoc meetings and touch down spaces, are available in two heights, featuring a soft square top in various sizes. The tables’ cast metal base features an innovative tech knit sock which also acts as cable management when used with an integrated power module.



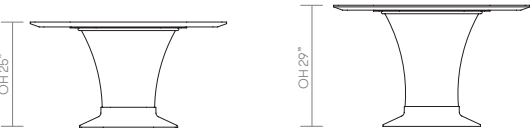
standard & optional features

● Standard feature □ Not available	FMGBT 4848	FMGBT 48RD	FMGBT 6060	FMGBT 60RD	FMGMT 4848	FMGMT 48RD	FMGMT 6060	FMGMT 60RD
	Soft Square Breakout 48" x 48"	Round Breakout 48" dia.	Soft Square Breakout 60" x 60"	Round Breakout 60" dia.	Square Meeting 48" x 48"	Round Meeting 48" dia.	Soft Square Meeting 60" x 60"	Round Meeting 60" dia.
Weight	□	□	□	□	□	□	□	□
1" TFL (Edge 69) top with matching edge detail	●	●	●	●	●	●	●	●
1" Laminate (Edge 38) top with clear finish cut back edge	●	●	●	●	●	●	●	●
1" Linoleum (Edge 33) faced plywood core top with a clear finish exposed edge detail available in Pewter, Charcoal or Mushroom	●	●	●	●	●	●	●	●
Famiglia power unit - 4 x outlets	●	●	●	●	●	●	●	●
Cast aluminum base and port hole finished in Black powder coat with Black acrylic accessory tray and Black technical mesh	●	●	●	●	●	●	●	●
Optional features:								
TFL (Edge 69) top available with contrasting Silver or Ply Effect edge detail	+ \$0	+ \$0	+ \$0	+ \$0	+ \$0	+ \$0	+ \$0	+ \$0
Laminate (Edge 38) top available with Black, Espresso or Solid White edge stain profile	+ \$30	+ \$30	□	□	+ \$30	+ \$30	□	□
Cast aluminum base and port hole available in Slate Gray powder coat with Slate Gray accessory tray and Slate Gray technical mesh	+ \$0	+ \$0	+ \$0	+ \$0	+ \$0	+ \$0	+ \$0	+ \$0
Famiglia power unit - 4 x outlets, 4 x USB and 1 x HDMI	+ \$455	+ \$455	+ \$455	+ \$455	+ \$455	+ \$455	+ \$455	+ \$455
Accessories								
DATPBL	White acrylic pen box with lid							85
DATPP	White acrylic pen pot							80

* [Click here to see available Edge Details](#)
* [Click here to see available TFL Options](#)
* [Click here to see available Laminate Options](#)
* [Click here to see available Linoleum Options](#)

* [Click here to see available Table Metal Finishes](#)
* [Click here to see Non-Stock Table Top Information](#)
* [Click here to see the full range of Famiglia chairs](#)

dimensions – OH - Overall Height OD - Overall Depth OW - Overall Width AH - Arm Height SH - Seat Height SW - Seat Width SD - Seat Depth



Code		TFL (69)	Lam A (38)	Lin LIN (33)	
FMGBT4848		4,004	4,434	4,622	
FMGBT48RD		4,004	4,434	4,622	
FMGBT6060		4,196	-	-	
FMGBT60RD		4,196	-	-	
FMGMT4848		4,204	4,635	4,821	
FMGMT48RD		4,204	4,635	4,821	
FMGMT6060		4,397	-	-	
FMGMT60RD		4,397	-	-	

TFL = Thermally Fused Laminate
A = Grade A Laminates
LIN = Linoleum
Edge 69, 38, 33 = Edge Detail
All prices listed in US \$

Famiglia Tables

Edge Stains

Standard



Clear

Optional



Solid Black



Espresso

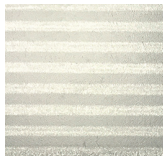


Solid White

Contrast Edges



Ply Effect

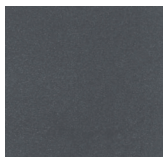


Silver Ply Effect

Standard Metal Finishes



Black



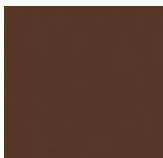
Slate Gray

Grade A Laminates

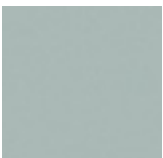
Grade A – Formica



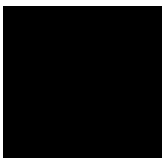
Fog



Dark Chocolate



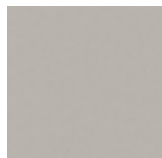
Fossil



Black



Mouse



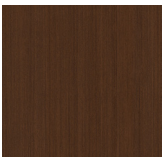
Sarum Gray



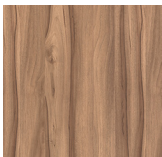
Storm



White



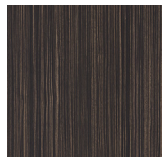
Chestnut Woodline



Oiled Walnut



White Ash



Ebony



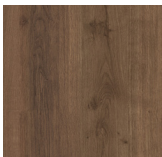
Smoky Brown Pear



Millennium Oak



Natural Ash

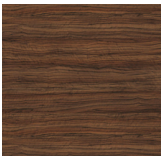


Planked Coffee Oak

TFL Surfaces



Carini Walnut



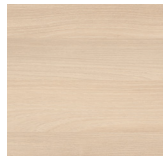
Mocha



Autumn



Strata Oak



Urban Maple



Highland Oak



Beech



Winter Oak



Hacienda White



White



Light Gray



Denim



Lemon Sorbet



Clay (Edge 69 only)

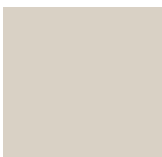
Linoleum Surfaces



Charcoal



Pewter



Mushroom

Non-Stock Table Top Information Ordering Instructions:

In addition to Allermuir’s standard graded-in table top finishes, non-stock laminates and solid surfaces are available.

Please contact US Customer Service to confirm availability and to request pricing.
Phone (419)887.5806
Toll free (888)887.5806

The full product specification is needed at the time of your call including the manufacturer’s name, pattern name, product number and finish.

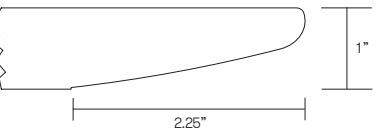
We may require a sample to be mailed to our corporate headquarters to ensure the material meets our quality standards. Allermuir reserves the right to reject any non-stock top material that, in Allermuir’s opinion, is unsuitable for application.

Samples can be sent to:
Allermuir
Attn: Internal Sales Support
4111 N. Jerome Road
Maumee, Ohio 43537



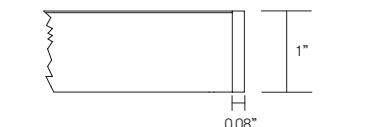
Edge Detail # 33

0.75" ply core, specified laminate or linoleum face and counterbalanced with a flat edge, and clear finish or 1" ply core, specified laminate or linoleum face and counterbalanced with a flat edge, clear finish.



Edge Detail # 38

HPL laminate over a 1" MDF core counter balanced. The edge is cut back with a chamfer. The edge is clear finish as standard or can be stained.



Edge Detail # 69

HPL laminate over a 1" MDF core with matching or solid PVC edge.