

Allermuir

Ricco

allermuir.com

Ricco

Design – Studio Ballendat

Ricco is a visually striking yet simple product that brings an innovative design approach to ad hoc work settings, meeting and conference environments.

With the development of Ricco we have understood the mechanical geometry of a synchronous tilting action and developed the chair so that its structural frame replicates the necessary movements. This innovative approach results in a visually and physically light and uncomplicated product that flexes and moves intuitively. The design also allows the tension of the tilting action to naturally balance to each user without the need of manual adjustment.



standard & optional features

- Standard feature
- ❑ Not available

	RIC115 Conference chair with mesh back and seat	RIC125-US Conference chair with mesh back and upholstered seat
Weight	22lbs	23lbs
Black Plastic components with Black mesh back and seat	●	❑
Black Plastic components with Black 3D self-supporting mesh back	❑	●
Upholstered seat fabric	❑	●
PU molded foam seat	❑	●
Synchronized mechanism with back locking function in upright position	●	●
Black gas lift cylinder	●	●
Black 2.5" hard wheel casters	●	●

Optional features:

Light Gray Plastic components, Mid-Gray mesh back and seat with a Light Gray gas lift cylinder and casters	\$90	-
Blue Plastic components, Blue mesh back and seat with a Black gas lift cylinder and casters	\$90	-
Copper Plastic components, Copper mesh back and seat with a Black gas lift cylinder and casters	\$90	-
Light Gray Plastic components, Mid-Gray mesh back and a Light Gray gas lift cylinder and casters	-	\$90
Blue Plastic components, Blue mesh back and a Black gas lift cylinder and casters	-	\$90
Copper Plastic components, Copper mesh back and a Black gas lift cylinder and casters	-	\$90
Soft wheel casters	+ \$45	+ \$45

- * Click here to see Textile Finishes & COM Requirements
- * Click here to see Ricco Plastic & Metal Finishes
- * Click here to see Ricco Mesh Finishes

Ships Fully Assembled

[Back to index](#)

Fabric Grade	C.O.M.			C.O.L.										A	B
	Mesh	1	2	3	4	5	6	7	8	9	10	11			
RIC115 <ul style="list-style-type: none">• Conference chair• Mesh back• Mesh seat• Black	995	-	-	-	-	-	-	-	-	-	-	-	-	-	-
RIC125-US <ul style="list-style-type: none">• Conference chair• Mesh back• Upholstered seat• Black	-	1119 1.0 yds	1131	1146 13.0 sq ft.	1164	1182	1200	1218	1254	1326	1440	1494	1254	1440	

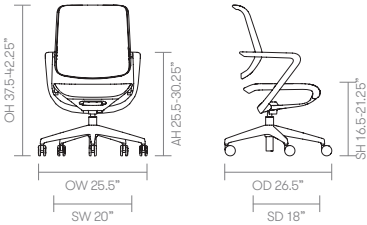


A, B = Leather
COM = Customer's Own Material [yds]
COL = Customer's Own Leather [sq ft]

All prices listed in US \$

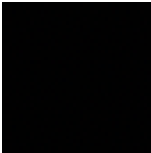
dimensions

OH - Overall Height OD - Overall Depth OW - Overall Width AH - Arm Height SH - Seat Height SW - Seat Width SD - Seat Depth

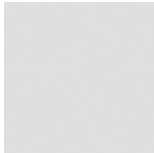


Ricco - Frame and Base

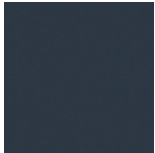
Ricco



Black
[Standard]



Light Gray



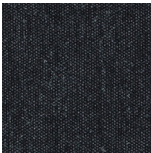
Blue



Copper

Ricco - Mesh Back & Seat (complementary)

Ricco



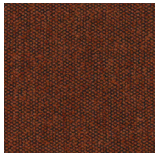
Black
[Standard]



Mid-Gray



Blue



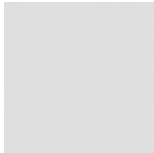
Copper

Ricco - Gas Cylinder and Casters

Ricco



Black
[Standard]



Light Gray