

AGUA

PERFORMANCE UPHOLSTERY FABRICS

Paint Pot Collection

A striking faux leather for indoor upholstery

Paint Pot

Natural looking faux leather in modern, refreshing colours

Perfect for:

Commercial, cruise, healthcare, hospitality and leisure.

Fabric Specifications

Flame retardant	BS7176 Crib 5, BS EN 1021-1:2006 1&2, BS5852 Crib 5, IMO Annex 1 Part 8.
Anti-bacterial/Anti-fungal	Resistant to microbial or fungal growth including Salmonella, E Coli and MRSA.
Waterproof	Hydrostatic Head BS3424 > 1 metre.
Martindale	Severe Contract > 400,000.
Stain resistant	Excellent stain removal has been observed for grease, ink, blood, urine, coffee, iodine, betadine, ketchup, chewing gum, chocolate, grape juice.
Composition	2% Vinyl Acrylic, 71% PVC, 9% Cotton, 18% Polyester..
Width	140cm (55") wide.
Weight	650gm ±5%

Technical Information

- We recommend a minimum of 32 stitches per 10 cm (8 stitches per inch) and seams must have a minimum 12mm (0.5") bite on the fabric.
- Can be stitched, tacked and glued. Cannot be heat welded.
- Please note that all fabric offered is subject to minor tolerance in respect of shade and other slight variations.
- Paint Pot can be colour co-ordinated with other Agua collections to produce stunning dual textured finishes.
- Bespoke colours can be produced subject to minimum quantity orders.
- Technical specifications may be amended, please check for the latest information.
- Please ask if you require a sample of the current batch available but be aware that stock can move quickly.

Fabric Care

- Poorly fixed clothing dyes, e.g. denim, will cause permanent staining. Most stains can be removed using cold/warm water and a clean microfibre cloth.
- Use a vacuum cleaner or soft brush to remove dust and solid particles.
- Wipe frequently with a damp cloth to maintain the appearance of the fabric.
- Remove all stains immediately before they set. All spillages should be removed immediately with a clean absorbent cloth.
- If soap based cleaners are used, all soap residues must be rinsed from the fabric.
- Can be steam cleaned in situ.
- Do not machine wash or dry clean.
- Can be cleaned with mild Hypochlorite solutions (10,000 ppm of available chlorine) e.g.: Haz Tabs, Chlor-Clean. Continued use may cause discolouration and surface damage.
- Always try cleaning products on a hidden piece of fabric to test suitability.
- Do not use: solvents, abrasives, chemical agents, waxes or polishes as this will damage the surface of the fabric.
- Do not use marker pens on the back of the fabric.
- Please refer to the Paint Pot Fabric Technical Specifications PDF download on the Agua website for further details.

Our Environmental Policy

Our products have always been phthalate free and Reach* compliant. Our processes are non-toxic and the methods used during manufacture and finishing ensure that potentially hazardous accidental cross contamination is minimised to the greatest degree possible. All our fabrics meet the stringent Oeko-Tex**

standards, regardless of origin, so are free from harmful chemicals and safe for human use.

* Registration, Evaluation, Authorisation and Restriction of Chemicals (EU regulation: 18th December 2006)

** See more: www.oeko-tex.com



Samples and Enquires

You can contact us for samples, order enquiries or information about any of our fabric ranges here:

Agua Fabrics Ltd,
Hyde House,
The Hyde, London NW9 6LH
T +44 (0)20 8205 0050
E info@aguafabrics.com
www.aguafabrics.com

AGUA
PERFORMANCE UPHOLSTERY FABRICS



Certificate No. FS 531220



PlanetMark Certified Business



PlanetMark
Certified
Business



Anti-Microbial



Bleach
Cleanable



Fire Retardant
Crib 5/IMO



Stain
Resistant



Waterproof



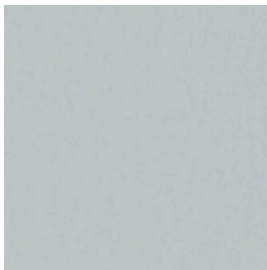
Martindale
Abrasion
Severe
Contract



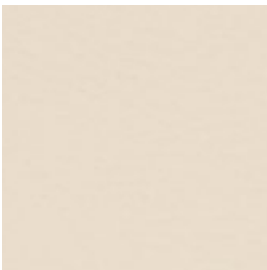
Phthalate
Free



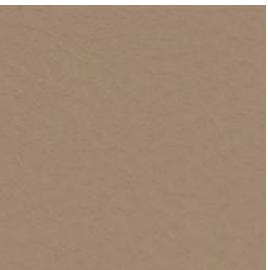
REACH
Compliant



Paint Pot Pebble



Paint Pot Ivory



Paint Pot Beige



Paint Pot Grey



Paint Pot Mushroom



Paint Pot Mustard



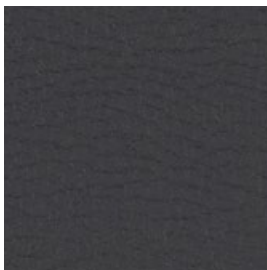
Paint Pot Steel



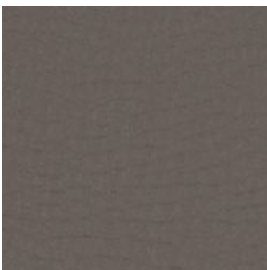
Paint Pot Mink



Paint Pot Burnt Orange



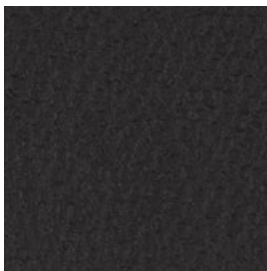
Paint Pot Graphite



Paint Pot Silver



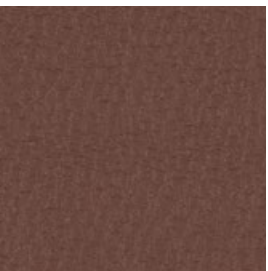
Paint Pot Claret



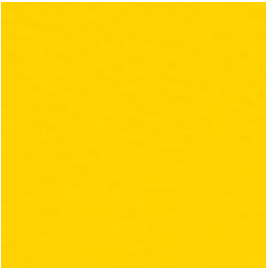
Paint Pot Black



Paint Pot Brown



Paint Pot Chestnut



Paint Pot Yellow



Paint Pot Purple



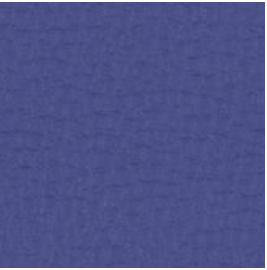
Paint Pot Sky



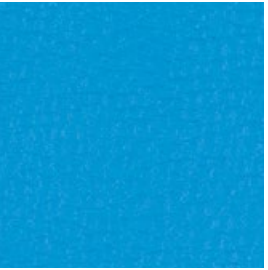
Paint Pot Lime



Paint Pot Orange



Paint Pot Royal



Paint Pot Azure



Paint Pot Spearmint



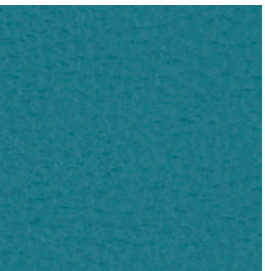
Paint Pot Rose



Paint Pot Wedgwood



Paint Pot Sapphire



Paint Pot Teal



Paint Pot Scarlet



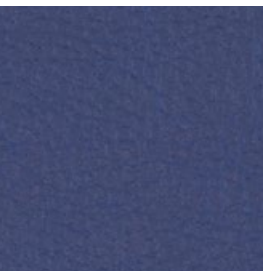
Paint Pot Ink



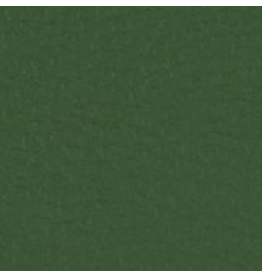
Paint Pot Blue



Paint Pot Emerald



Paint Pot Marine



Paint Pot Grass