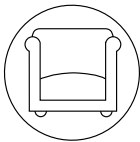


Coco

A textured tweed effect upholstery

Upholstery
FR Contract Fabric



Coco

Composition
100% Polyester with FR backcoating

Width
Approx 140cm (55")

Weight
800g/m² (± 5%)

End Use
Upholstery

Flammability Ratings
BS 7176: Medium Hazard
BS 5852: 2006 Ignition Source 5
EN1021-1/2
B1 Germany
IMO FTP Code 2010 Part 8
NFPA 260 (USA)
CAL 117

Product Performance
Colour Fastness to Light
Grade 5
Colour Fastness to Rubbing
Wet>4 Dry>4

Abrasion

60,000+
Martindale
Rubs

50,000+
Wyzenbeek
Rubs

Technical Features
Flame Retardant

- Care Instructions**
- Vacuum and wipe clean routinely with a microfibre cloth lightly dampened with cold water only.
 - Soak up spillages as soon as possible with an absorbent dry cloth to prevent staining.
 - Do not steam clean - heat seals in stains.
 - Do not use bleach.
 - Do not tumble dry.
 - Do not dry clean.
 - Do not fully immerse in water.
 - Do not apply solvents, alcohol or any other chemical cleaners.





Coco
919 Zinc

LRV 26.7



Coco
814 Espresso

LRV 8.7



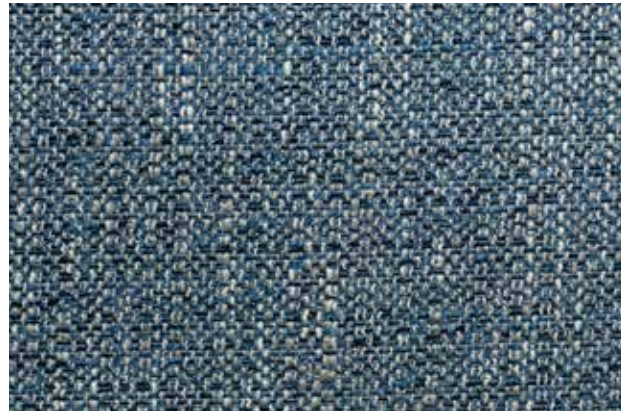
Coco
411 Spice

LRV 10.7



Coco
122 Wedgewood Blue

LRV 15.3



Coco
110 Pacific

LRV 21.4



Coco
446 Redcurrant

LRV 8.3



Coco
436 Paprika

LRV 7.7



Coco
111 Peacock

LRV 16.8



Coco
925 Putty

LRV 32.5



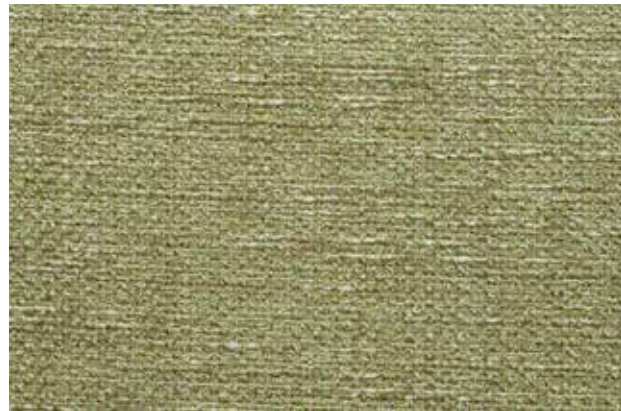
Coco
709 Pecan

LRV 18.1



Coco
155 Duck Egg Blue

LRV 25.4



Coco
242 Laurel

LRV 34.8



Coco
508 Ivory

LRV 49.4



Coco
911 Steel

LRV 7.3