

Foster

7072.01 – 7072.27



Product

Upholstery

Description

A unicoloured, universal boucle upholstery fabric with a super-soft touch

Composition

97% recycled polyester FR / 3% polyester FR

Width

± 141 cm, ± 56 inches

Weight

± 749 gr/m², ± 24 oz/yd²

Flame retardancy

EN 1021/1-2 , Pass

BS 5852 , Crib 5

NF P 92/503-507 or NF D 60-013 , M1

DIN 4102 , B1

Cal TB 117-2013, section 1 , Pass

IMO 2010 FTP part 8 , Pass

NFPA 260 , Class 1

Abrasion

ISO 12947-2 , 60.000 rubs Martindale

ASTM D3597/D4157 (#10 cotton duck) , 100.000 double rubs Wyzenbeek

Pilling

ISO 12945-2

4 (scale 1-5)

ASTM D3511

5 (scale 1-5)

Colorfastness to crocking

ISO 105 X12

wet 4-5 (scale 1-5) / dry 4-5 (scale 1-5)

AATCC 8

wet 5 (scale 1-5) / dry 5 (scale 1-5)

Colorfastness to light

ISO 105 B02

6 (scale 1-8)

AATCC 16.2 opt.1 or 16.3 opt. 3

5 (scale 1-5)

Seam slippage

ISO 13936-2

warp 4 mm / weft 2 mm

ASTM D4034

warp 51 lbs / weft 106 lbs

Breaking strength

ISO 13934-1

warp 1370 N / weft 1220 N

ASTM D5034

warp 263 lbs / weft 234 lbs

Labels



USCG -
EU MRA
0038



STANDARD
100
S21-3365
Hohenstein HTTI

Care & Maintenance



Shrinkage

Shrinkage 70° warp -2% / weft -1.7%

Foster

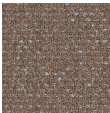
7072.01 – 7072.27



7072.01



7072.02



7072.03



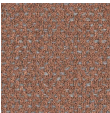
7072.04



7072.05



7072.06



7072.07



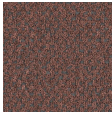
7072.08



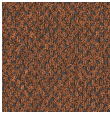
7072.09



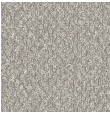
7072.10



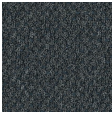
7072.11



7072.12



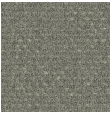
7072.13



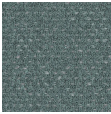
7072.14



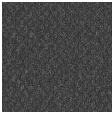
7072.15



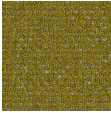
7072.16



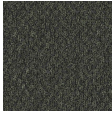
7072.17



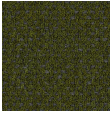
7072.18



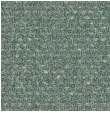
7072.19



7072.20



7072.21



7072.22



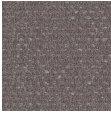
7072.23



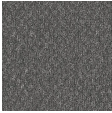
7072.24



7072.25



7072.26



7072.27