

Moore

7075.01 – 7075.16



Product

Upholstery

Description

100% recycled upholstery fabric with a tactile, graphic grid in a large-scale, multicoloured weave in 16 colourways

Composition

100% recycled polyester FR

Width

± 141 cm, ± 56 inches

Weight

± 835 gr/m², ± 27 oz/yd²

Flame retardancy

EN 1021/1-2 , Pass

BS 5852 , Crib 5

NF P 92/503-507 or NF D 60-013 , M1

DIN 4102 , B1

UNI 9175 , Classe 1

Cal TB 117-2013, section 1 , Pass

IMO 2010 FTP part 8 , Pass

NFPA 260 , Class 1

Abrasion

ISO 12947-2 , 70.000 rubs Martindale

ASTM D3597/D4157 (#10 cotton duck) , 100.000 double rubs Wyzenbeek

Pilling

ISO 12945-2

4-5 (scale 1-5)

ASTM D3511

5 (scale 1-5)

Colorfastness to crocking

ISO 105 X12

wet 4-5 (scale 1-5) / dry 4-5 (scale 1-5)

AATCC 8

wet 5 (scale 1-5) / dry 5 (scale 1-5)

Colorfastness to light

ISO 105 B02

6 (scale 1-8)

AATCC 16.2 opt.1 or 16.3 opt. 3

4.5 (scale 1-5)

Seam slippage

ISO 13936-2

warp 2 mm / weft 2 mm

ASTM D4034

warp 136 lbs / weft 126 lbs

Breaking strength

ISO 13934-1

warp 1790 N / weft 1760 N

ASTM D5034

warp 302 lbs / weft 296 lbs

Labels



USCG -
EU MRA
0038



STANDARD
100
S21-3365
Hohenstein HTTI

Care & Maintenance

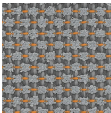


Shrinkage

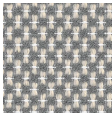
Shrinkage 50° warp -1.6% / weft -3%

Moore

7075.01 – 7075.16



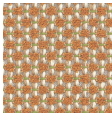
7075.01



7075.02



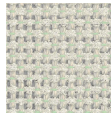
7075.03



7075.04



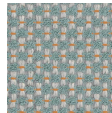
7075.05



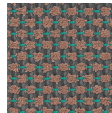
7075.06



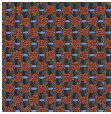
7075.07



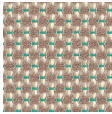
7075.08



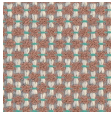
7075.09



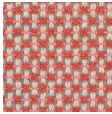
7075.10



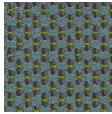
7075.11



7075.12



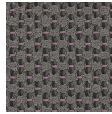
7075.13



7075.14



7075.15



7075.16