



**HOSPITALITY  
ESSENTIALS**

**MAYER  
FABRICS**  
+  
**Allermuir**





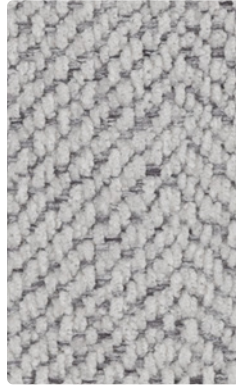
**PORTER**  
WC980-017 Marble



**SANCTUARY**  
643-007 Ivory



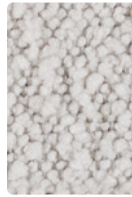
**FITZ**  
WC931-017 Shore



**ADLER**  
640-006 Alloy



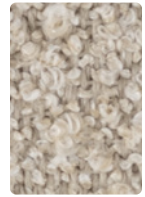
**FITZ**  
WC931-007 Abalone



**RITZI**  
401-007 Cloud



**EXPLORER**  
EX-027 Bone



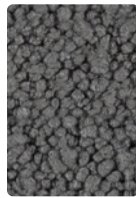
**BELIZE**  
326-007 Shell



**BELIZE**  
326-006 Haze



**EXPLORER**  
EX-036 Quarry



**RITZI**  
401-026 Shale



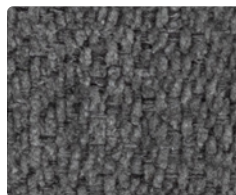
**FITZ**  
WC931-006 Shark Fin



**FLORA**  
801-006 Vapor



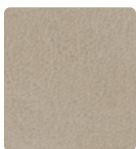
**BLOOM**  
800-000 Dogwood



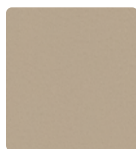
**ADLER**  
640-016 Slate



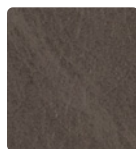
**PORTER**  
WC980-016 Smoke



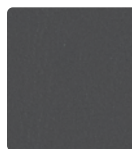
**OMEGA**  
OM-027 Stone



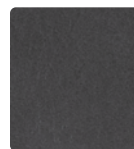
**PROSPECT**  
PS-037 Sand



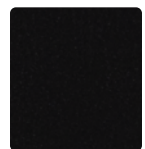
**OMEGA**  
OM-020 Taupe



**PROSPECT**  
PS-036 Steel



**OMEGA**  
OM-016 Granite



**PROSPECT**  
PS-056 Night

Fitz & Flora shown at approx. 50% scale. Bloom shown at approx 25% scale.  
Additional colors are available. Please refer to the Mayer Fabrics website.

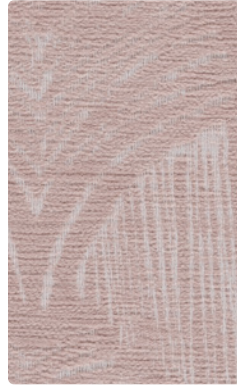




**PORTER**  
WC980-007 Fossil



**SANCTUARY**  
643-002 Honey



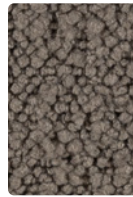
**FITZ**  
WC931-011 Bellini



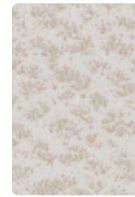
**FLORA**  
801-001 Scarlet



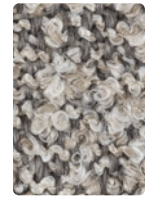
**FLORA**  
801-002 Mustard Seed



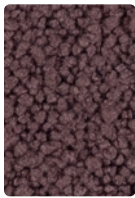
**RITZI**  
401-010 Shiitake



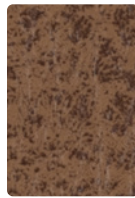
**EXPLORER**  
EX-007 Vanilla



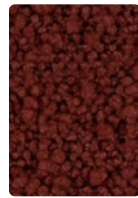
**BELIZE**  
326-017 Shoreline



**RITZI**  
401-005 Mauve



**EXPLORER**  
EX-019 Saddle



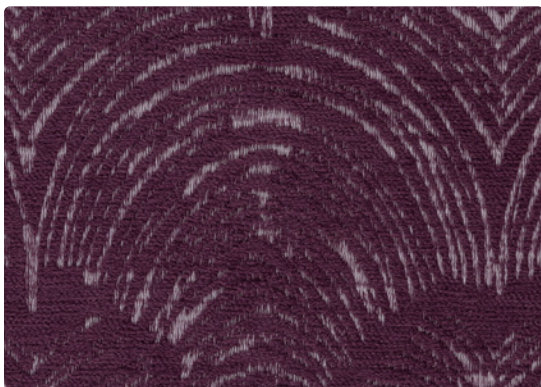
**RITZI**  
401-011 Maroon



**SANCTUARY**  
643-000 Hazelnut



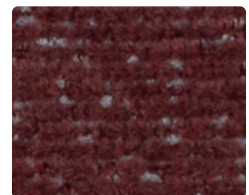
**BLOOM**  
800-001 Auburn



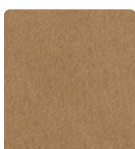
**FITZ**  
WC931-005 Aubergine



**SANCTUARY**  
643-001 Rosewood



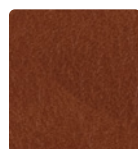
**PORTER**  
WC980-008 Cabernet



**OMEGA**  
OM-002 Khaki



**PROSPECT**  
PS-019 Turmeric



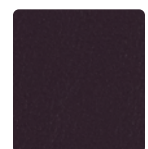
**OMEGA**  
OM-009 Clay



**PROSPECT**  
PS-011 Brick



**OMEGA**  
OM-030 Buckskin



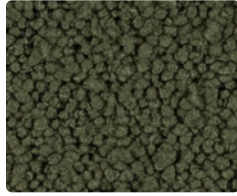
**PROSPECT**  
PS-005 Regal

Fitz & Flora shown at approx. 50% scale. Bloom shown at approx 25% scale.  
Additional colors are available. Please refer to the Mayer Fabrics website.

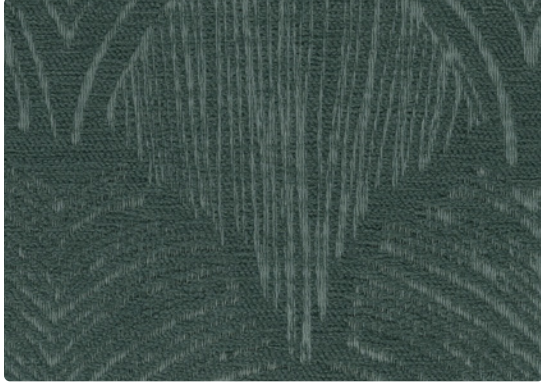




**SANCTUARY**  
643-013 Evergreen



**RITZI**  
401-023 Forest



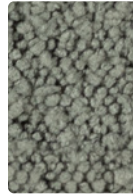
**FITZ**  
WC931-013 Kelp



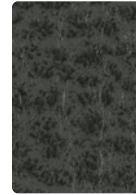
**FLORA**  
801-003 Bluegrass



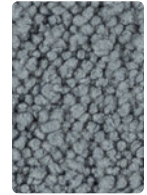
**ADLER**  
640-014 Lake



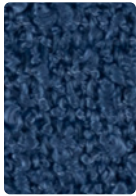
**RITZI**  
401-013 Thyme



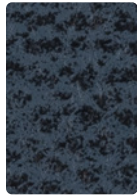
**EXPLORER**  
EX-003 Jade



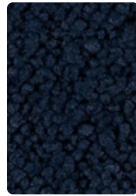
**RITZI**  
401-043 Opal



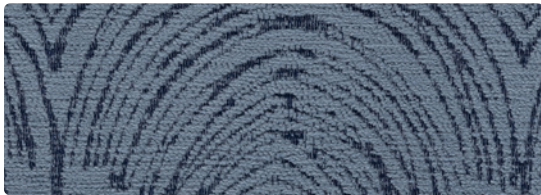
**BELIZE**  
326-014 Tidal



**EXPLORER**  
EX-014 Indigo



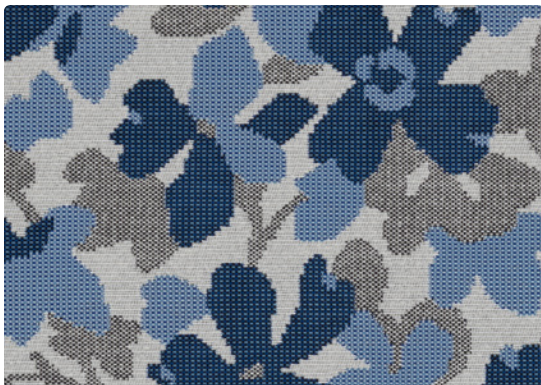
**RITZI**  
401-004 Naval



**FITZ**  
WC931-004 Atlantis



**BLOOM**  
800-013 Juniper



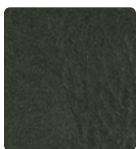
**FLORA**  
801-004 Cornflower



**SANCTUARY**  
643-004 Atlantis



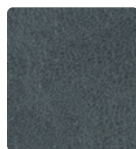
**PORTER**  
WC980-006 Ink



**OMEGA**  
OM-003 Hunter



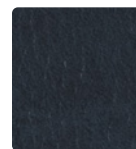
**PROSPECT**  
PS-013 Spruce



**OMEGA**  
OM-004 Bluestone



**PROSPECT**  
PS-014 Ocean



**OMEGA**  
OM-014 Midnight



**PROSPECT**  
PS-034 Indigo

Fitz & Flora shown at approx. 50% scale. Bloom shown at approx 25% scale.  
Additional colors are available. Please refer to the Mayer Fabrics website.



TECHNICAL INFORMATION

Pattern 54"	Content and Backing	Certifications	Weight/ Linear Yd.	Pattern Repeat	Finish	Abrasion Wyzenbeek	Light- Fastness	Flammability	Cleaning Code
ADLER <i>Directional Railroaded</i>	100% Polyester Backing: Polyester	GREENGUARD Gold	16.5 oz.	0.625" H, 1.875" V	Stain Repellent - PFAS Free	60,000^ Double Rubs	40 hours	Cal. 117-2013 NFPA 260/UFAC Class 1	S
BELIZE <i>Directional</i>	91% Recycled Olefin, 9% Polyester Backing: Acrylic	GREENGUARD Gold, OEKO-TEX® Certified	23.56 oz.	None	Stain Repellent - PFAS Free	100,000^ Double Rubs	1500 hours	Cal. 117-2013 NFPA 260/UFAC Class 1	W, BC
BLOOM <i>Directional</i>	69% Polyacrylic, 31% Polyester Backing: Acrylic	GREENGUARD Gold, OEKO-TEX® Certified	20.1 oz.	28.75"H, 30"V	None	100,000^ Double Rubs	40 hours	Cal. 117-2013 NFPA 260/UFAC Class 1	WS, BC
EXPLORER	70% Vinyl - Phthalate Free face, 30% Polyester backing	GREENGUARD Gold	32 oz.	None	Soil & Stain Resistant Top Coat	250,000^ Double Rubs	300 hours	Cal. 117-2013 NFPA 260/UFAC Class 1	WS, BC, CFC
FITZ <i>Directional</i>	100% Polyester Backing: Crypton® Moisture Barrier	GREENGUARD Gold	18.8 oz.	9.875" H, 9.75"V	Crypton®	100,000^ Double Rubs	40 hours	Cal. 117-2013 NFPA 260/UFAC Class 1	W, C, BC
FLORA <i>Directional</i>	69% Polyester, 31% Nylon Backing: Acrylic	GREENGUARD Gold	15.32oz.	9.25" H, 8.5"V	Nanotex® by Crypton	100,000^ Double Rubs	40 hours	Cal. 117-2013 NFPA 260/UFAC Class 1	WS, BC
OMEGA	43% Polyurethane Polycarbonate - PVC Free face, 57% Polyester backing	GREENGUARD Gold	25.4 oz.	None	WRITE AWAY™ - Soil & Stain Resistant Top Coat with Ink Resistant Technology	250,000^ Double Rubs	200 hours	Cal. 117-2013 NFPA 260/UFAC Class 1	WS, BC, CFC
PORTER <i>Directional</i>	100% Polyester Backing: Crypton® Moisture Barrier	GREENGUARD Gold	18.29 oz.	None	Crypton®	100,000^ Double Rubs	40 hours	Cal. 117-2013 NFPA 260/UFAC Class 1	W, C, BC
PROSPECT	43% Polyurethane Polycarbonate - PVC Free face, 57% Polyester backing	GREENGUARD Gold	25.4 oz.	None	WRITE AWAY™ - Soil & Stain Resistant Top Coat with Ink Resistant Technology	250,000^ Double Rubs	200 hours	Cal. 117-2013 NFPA 260/UFAC Class 1	WS, BC, CFC
SANCTUARY <i>Directional</i>	100% Polyester Backing: Acrylic	GREENGUARD Gold	20.19 oz.	Random Match	Nanotex® by Crypton®	100,000^ Double Rubs	40 hours	Cal. 117-2013 NFPA 260/UFAC Class 1	W, C, BC

REDUCED ENVIRONMENTAL IMPACT

These products are GREENGUARD Certified or GREENGUARD Gold Certified for low chemical and particle emissions to UL standard UL 2818 and may contribute to LEED certification.

CARE AND CLEANING INFORMATION

S: Solvent      W: Water-Based Cleaner      WS: Water/Solvent Cleaner

C: Crypton Cleaning      CFC: Coated Fabrics Cleaning – Refer to Mayer website for complete cleaning info.

BC: Bleach Cleanable – 1 part bleach, 9 parts water = 10% bleach, 90% water solution. **Do not clean/disinfect fabric for longer than 10 minutes using the 10% bleach solution. Always rinse promptly with clean water after applying the bleach solution. Failure to do so will void any and all warranties.**

DYE TRANSFER DISCLAIMER

Certain clothing and accessory dyes (such as those used on denim jeans) may migrate to lighter colors. This phenomenon is increased by humidity and temperature and is irreversible. Mayer Fabrics will not assume responsibility for dye transfer caused by external contaminants. Please check compatibility when using this product in combination with painted or varnished surfaces.

ADDITIONAL INFORMATION

^Abrasion test results exceeding ACT Performance Guidelines are not an indicator of product lifespan. Multiple factors affect fabric durability and appearance retention.

\*A multi-use fabric that can be used for upholstery, panels, wrapped walls, and acoustic.

Warranty: Please refer to the Mayer website for warranty information by pattern.

Custom Colors: All patterns can be custom colored. Minimum yardage applies.

Digital Swatch Card Color Matching: Due to color variations on different monitors and color printers, actual swatch colors may vary slightly. Please request a memo sample from Mayer Fabrics to ensure proper color representation.

Complete and current product information available at [mayerfabrics.com](https://mayerfabrics.com).



These fabrics meet or exceed these ACT performance guidelines.  
\*Certification Marks owned by ACT®

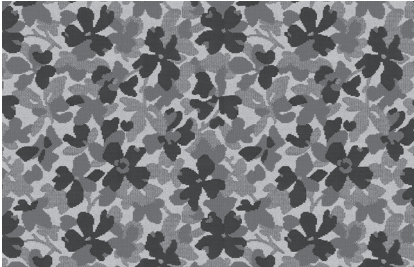
©2025  
ALLERMUIRHOSPCD\_MF0325



BLOOM



FITZ



FLORA

Allermuir

MAYERFABRICS

T 800.428.4415      [mayerfabrics.com](https://mayerfabrics.com)  
500 S. Kitley Ave. Indianapolis, IN 46219